

T 06N, R 34E., W.M.

Corner Code No. J-17

Segregated Surveys:

Name: NORTHEAST CORNER FRACTIONAL SECTION 15

Corner No.:

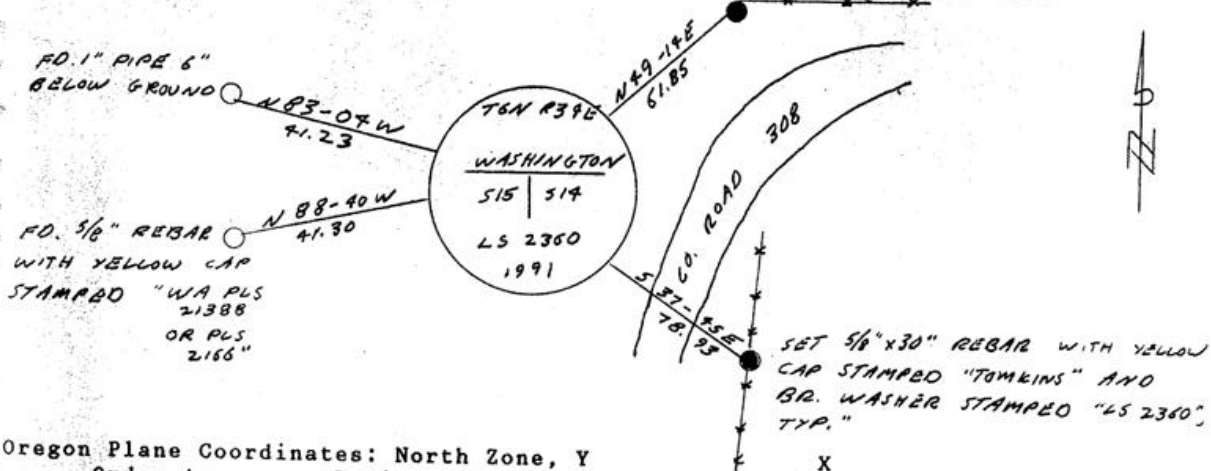
Reserve, Townsite

DLC, HES, Tract, Mining Claim, Indian Allotment, Federal

1. History of Corner Establishment and Subsequent Restoration:
 CORNER ORIGINALLY SET IN 1865 BY ODELL UNDER GLO CONTRACT 110 AS A POST, CHARRED STAKE, PITS, AND MOUND. CORNER SHOWN ON 1951 SURVEY BY CRIGER AND MELTON (Q-1618-AX) AS A "YELLOW STONE 10"X16"X5" THICK." 1953 SURVEY BY NEWBILL (90-61-AX) SHOWS A "PIPE" AT THE CORNER, AS DOES 1971 SURVEY BY KRUMBEIN (H-67-AX). 1990 SURVEY BY BARTLESON FOR MCKEE REJECTS PIPE AND SETS A 5/8" PIN AND YELLOW CAP

2. Description of Evidence Found:
 FOUND PIPE, REBAR WITH YELLOW CAP STAMPED "WA 21388 OR 2166" AND YELLOWISH STONE 15"X11"X5" WITH PLAINLY SCRIBED "+" AT FOOT OF LARGE LOCUST POST IN THE MIDDLE OF A BUSH. DISTANCE FROM STONE TO MILE POST 21 IS 43 FT. SHORT OF RECORD DISTANCE, BUT IS WITHIN 23 FT. OF RECORD DISTANCE TO NORTH 1/4 CORNER.

3. Describe Monument, Accessories, and Corollary Data to Perpetuate this Corner Location. Diagram corner, indicate meridian and reference to map of Record. Surveyor's Field Book No. Page No. Date of Work 02/08/91



Oregon Plane Coordinates: North Zone, Y
 Order Accuracy. Derived From:

Pin Pointed on Photo No. Date Located at

SURVEYOR'S CERTIFICATE

This corner record correctly represents work performed by me or under my direction in compliance with the provisions of the laws of the State of Oregon.

Signature *Paul W.P. Tomkins* Date 2/10/91

REGISTERED PROFESSIONAL LAND SURVEYOR

Paul W.P. Tomkins

OREGON JULY 26, 1988 PAUL W. P. TOMKINS 2360

Certificate No. 2360

AUDITOR'S CERTIFICATE

Filed for record this ... day of ..., 19... at ... M. in Book ... of ... at Page ... at the request of

RECEIVED BY

County Auditor

Umatilla County Surveyor

Date 3-91

Rec'd By KA

No. 91-21-C