

OREGON CORNER RESTORATION FORM

Section: 14 & 15
Township: 6 North
Range: 34 East of the Willamette Meridian
County: Umatilla
Date: June 1, 2002

Corner Indexing Information: Township 6N Range 34E Corner Code J-K 17 (Willamette Meridian)
Additional Identifier: (e.g. BLM designation for the corner, street intersection, plat name, block, lot, etc.)

This corner is common to sections 14 & 15.

Oregon Plane Coordinates: N: 857108.714 E: 8700713.301

Zone: North Order: second Datum: NAD83-91 Convergence: 1°23'29.5" Scale Factor: .99997105

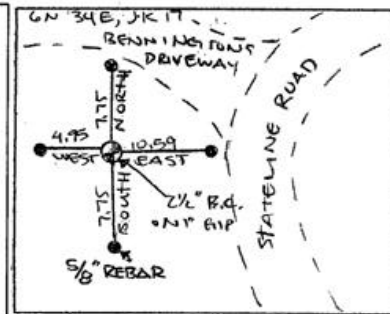
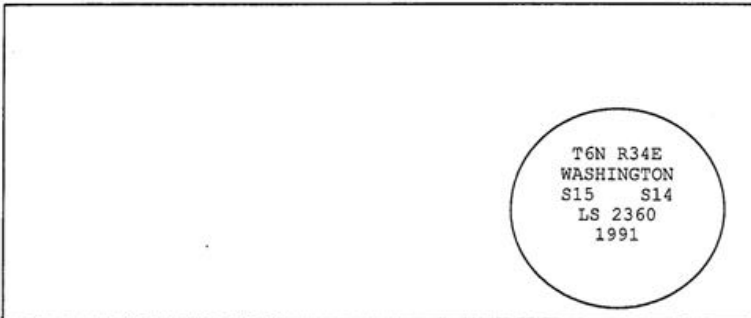
Previous Renewals/Surveys, etc: This corner was originally set by U.S. Deputy Surveyors William Odell and William Lewis under their contract No. 110 dated February 7, 1865. The Surveyor General's notes state "set post corner, drove charred stake, dug pits and raised mounds per instructions".

Monument(s) & Accessories Found (Condition & Source):

At the intersection of the west line of section 14, T6N R34E, and Stateline, found 2 1/2" brass cap on 1" galvanized pipe.

Monument Set (Procedures & Description):

Monument Detail:



New Accessories: WE SET:

A 5/8 rebar with yellow plastic cap stamped 'Tomkins Surveying' which bears East ~ 10.59 feet from the corner. Attached a Umatilla County Bearing Object Sign to a t-post. A 5/8 rebar with yellow plastic cap stamped 'Tomkins Surveying' which bears North ~ 7.75 feet from the corner.

Location & Comments:

Stateline Road at curve south

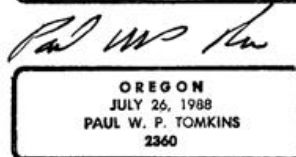
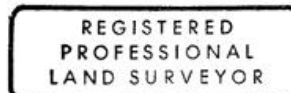
Compass Declination:

19° East

Firm/Agency: Tomkins Land Surveying, Inc.
20 E. Poplar, Suite 204
Walla Walla, WA 99362

Party Chief: Bryan Martin
Notes: Bryan Martin
Witness: Eric Flowers

Surveyor's Seal



renews 6/30/04

6/30/02