

Index  
File No. G-5

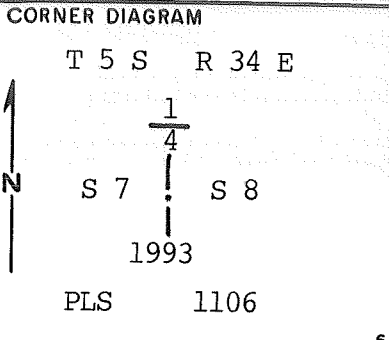
**CORNER RECORD (SEARCH)**

(Ref. FSM 7151.4)

Tract or  
Survey No. \_\_\_\_\_ Cor.  
No. \_\_\_\_\_

T 5 S        R. 34 E \_\_\_\_\_ R.D. La Grande \_\_\_\_\_ County Union

Merid. Willamette \_\_\_\_\_ N.F. Wallow-Whitman State Oregon \_\_\_\_\_



**DESCRIBE CORNER MONUMENT FOUND** 1

Found a basalt stone 13 x 8 x 5 ins marked 1/4 on W face firmly set in ground.

**DESCRIBE BEARING TREES OR OTHER OFFICIAL ACCESSORIES FOUND** 2

A ponderosa pine 28" in dia. with open blaze and visible scribe marks brs. S48°E, 24.4' dist (37 lks) per record.  
No trace of Section 7 bearing tree.

**PHOTO IDENTIFICATION DATA**

Photo No. \_\_\_\_\_

Filed At. \_\_\_\_\_

Object Ident. \_\_\_\_\_

Ident. By \_\_\_\_\_

*Signature* 7

**DESCRIBE CORNER LOCATION RELATIVE TO NEAR-BY FEATURES, ALSO HOW TO REACH CORNER** 3

Corner is on North slope approx. 800 - 1000' West of Road No. 5160-600 and approx. 300' North of start of Road No. 630.

**PLANE COORDINATE POSITION DATA**

State \_\_\_\_\_ Zone \_\_\_\_\_

X \_\_\_\_\_

Y \_\_\_\_\_

Estob. By \_\_\_\_\_

*Agency* 8

Signature Wells R Wells Title Land Surveyor Division \_\_\_\_\_ Headquarters Pendleton, OR Date 10-27-93 4

FS-7100-52 (3/68) 5

7

**CORNER RECORD (PERPETUATION)**

**MONUMENT: DESCRIBE NEW MONUMENT SET, OR WORK DONE TO PRESERVE EXISTING MONUMENT**

At position of original corner stone...  
Set a 2½" aluminum cap on 2½"x30" aluminum pipe 22" in ground  
surrounded with mound of stone. Set a 6' steel fence post  
North of corner & attached sign 54-9 & 54-2.  
Compass declination 18° East.

9

**ACCESSORIES: DESCRIBE NEW BT'S WITNESS OBJECTS ETC. ESTABLISHED, OR WORK DONE TO PRESERVE EXISTING EVIDENCE**

New bearing trees established:  
A 9½" ponderosa pine brs N47°W, 79.7' scribed 1/4S7 BT.  
A 8" ponderosa pine brs N29°E, 92.8' scribed 1/4S8 BT.  
A 11½" Western Larch brs. S51°W, 96.4' scribed 1/4S7 BT.  
New bearing trees have a brass washer stamped PLS 1106 nailed to  
face of blaze. Attached sign 54-3 & 54-9, painted face of blaze &  
a 6" red band around each BT.

10

Work Done By. W.R.Wells Title Land Surveyor Date 10-27-93 State Registration No. PLS 1106  
or Agency  
Certified Cor. Record Prepared? Yes XXXX Filed At Matilla County Surveyor Date 8/94

11

**REMARKS**

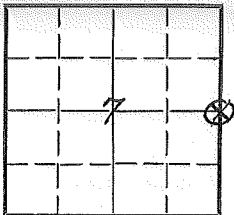
Index File No. G-5 T. 5 S R34 E WM. M. Tract or Surv. No. Cor. 12 13

LAND CORNER RECORD

5680-2

1. T 55 R 34E No. G-5 Cor. 1/4 Mer. Will State OREGON (Rectangular) N. F. WALLOWA-WHITMAN Dist. LA GRANDE

2. Corner Status



7. Photo Identification

Photo No. \_\_\_\_\_

Ident. By: \_\_\_\_\_

8. Plane Coordinate Position Data

State \_\_\_\_\_ Zone \_\_\_\_\_

X \_\_\_\_\_

Y \_\_\_\_\_

Estab. By \_\_\_\_\_

Field Book No. \_\_\_\_\_

Where Filed \_\_\_\_\_

9. Evaluation

Authentic \_\_\_\_\_ X

Needs Verif. \_\_\_\_\_ Monument NO

Re-estab. X Survey \_\_\_\_\_

Land Status \_\_\_\_\_

3. Original Description \_\_\_\_\_ Vol. \_\_\_\_\_ Page \_\_\_\_\_ Where Recorded \_\_\_\_\_

4. Description of Corners: BASALT STONE 13"x8"x5", 9" INGROUND FOR 1/4 SEC. COR.  
FROM WHICH: A PINE 20" BEARS S 48° E 37 LKS. DIST  
A PINE 11" BEARS S 70° W 9 LKS. DIST

5. Investigation Notes:

26" RR. LINE, BLAZE BARELY VISIBLE  
BUT HAS BEEN CHOPPED INTO  
AND SCRIBING VISIBLE.

PAINTED B.T. AND LINE N & S WITH RED PAINT  
GO SOUTH AT FOUR CORNER ON STARKEY  
HVV TO DRY CAMAS, TURN OFF ON FIRE RD.  
19B TO SEC. LINE, WALK 1386' SOUTH.

6. Signed T. WILLIAMS Title SURVEY TECH. Date JUNE 7, 1966

PERPETUATION RECORD

10. Monument:

11. Accessories

Field Book \_\_\_\_\_ Page \_\_\_\_\_

12. Set By \_\_\_\_\_ Title \_\_\_\_\_

License \_\_\_\_\_ Agency \_\_\_\_\_ Date \_\_\_\_\_

13. Recorded By \_\_\_\_\_ Volume \_\_\_\_\_ Page \_\_\_\_\_

(Agency)

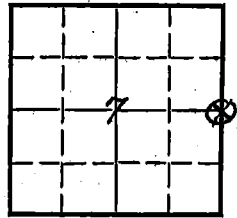
(Date) \_\_\_\_\_ (City) \_\_\_\_\_ (County) \_\_\_\_\_ (State) \_\_\_\_\_

14. Remarks:

# LAND CORNER RECORD

1. T. 55 R. 34E No. G-50 Cpr. 1/4 Mer. Will State OREGON N. F. WALLOWA-IMMUTUA Dist. LA GRANDE

2. Corner Status



3. Original Description \_\_\_\_\_ Vol. \_\_\_\_\_ Page \_\_\_\_\_ Where Recorded \_\_\_\_\_

4. Description of Corners: BASALT STONE 13"x8"x5", 9" INGROUND FOR 1/4 SEC. COR.  
FROM WHICH: A PINE 20" BEARS S48°E 37LKS. DIST  
A PINE 11" BEARS S70°W 9LKS. DIST

5. Investigation Notes:

26" RD. LIME, BLAZE BARELY VISIBLE  
BUT HAS BEEN CHOPPED INTO  
AND SCRIBING VISIBLE.

PAINTED B.T. AND LINE N & S WITH RED PAINT  
GO SOUTH AT FOUR CORNER ON STARKEY  
Hwy TO DRY CAMAS. TURN OFF ON FIRE RD.  
198 TO SEC. LINE, WALK 1386' SOUTH.

7. Photo Identification

Photo No. \_\_\_\_\_

Ident. By: \_\_\_\_\_

8. Plane Coordinate Position Data

State \_\_\_\_\_ Zone \_\_\_\_\_

X \_\_\_\_\_

Y \_\_\_\_\_

Estab. By \_\_\_\_\_

Field Book No. \_\_\_\_\_

Where Filed \_\_\_\_\_

9. Evaluation

Authentic \_\_\_\_\_ X

Needs Verif. \_\_\_\_\_ Monument NO

Re-estab. X Survey \_\_\_\_\_

Land Status \_\_\_\_\_

6. Signed T. WILLIAMS Title SURVEY TECH. Date JUNE 7, 1966