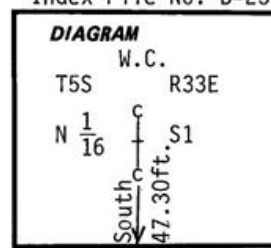


CERTIFIED RECORD OF LAND CORNER MONUMENTATION

Index File No. B-23

History of original corner establishment:

No corner was originally set.



Description of corner evidence found:

Description of monument and accessories I established to perpetuate the

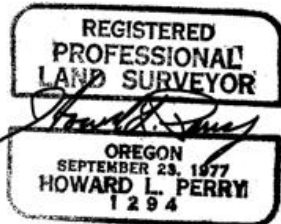
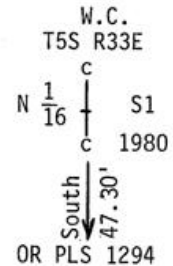
original location of this corner: At surveyed point set 40 penny spike. Corner falls in north shoulder of State Hwy. No. 244, therefore set 2 1/2"x30" galvanized pipe on N-S C1/4 line S1, 50 ft. north of CN 1/16 corner for witness corner stamped:

Set pipe 22" in ground with mound of stone to cap.

Bearing Trees to true CN 1/16 corner position.

A Lodge Pole Pine 6" dia. bears S9°E, 120.1 ft., scribed CN 1/16 S1 BT.
A Lodge Pole Pine 7" dia. bears N0° 30'E, 62.3 ft., scribed CN 1/16 S1 BT.

Attached 54-3 and 54-4 signs to both BTs. Attached brass washer stamped LS 1294 to foot blaze of both BTs. Painted blazes and 6" band around both BTs red. Attached 54-2, 54-4 and 54-9 signs to metal post 4 ft. north of witness corner.



I hereby certify the above corner monument was reestablished as herein described on June 13, 1980.

Witnesses: R. Orton
G. Orton
D. Allen

Office of..... County Surveyor..... County of..... Umatilla
Oregon
State of....., I hereby certify that the within instrument was filed in this office for record on the..... day of..... December....., 19..80
David P. Purnheim..... by..... Betty Shatto.....
(COUNTY OFFICIAL) (DEPUTY)