

Index  
File No. Z-9

**CORNER RECORD (SEARCH)**

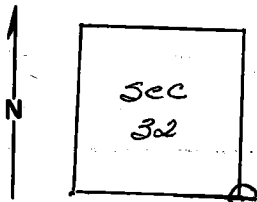
(Ref. FSM 7151.4)

Tract or Survey No. \_\_\_\_\_ Cor. No. \_\_\_\_\_

T 5S R. 31E R.D. Ukiah County Umatilla

Merid. W.M. N.F. Umatilla State Oregon

**CORNER DIAGRAM**



**DESCRIBE CORNER MONUMENT FOUND**

Corner was not found.

**DESCRIBE BEARING TREES OR OTHER OFFICIAL ACCESSORIES FOUND**

No BT found. They were a 14" and a 16" fir. There is evidence of several firs which have fallen long ago and are gone or nearly gone. There is a Pilot Rock Lumber Co location poster on a 12" fir above top of cut bank west of highway 395. It says it is approx. 350' north of corner. (This is across Camas Crk & across highway from where corner should be.)

**DESCRIBE CORNER LOCATION RELATIVE TO NEAR-BY FEATURES, ALSO HOW TO REACH CORNER**

**PHOTO IDENTIFICATION DATA**

Photo No. \_\_\_\_\_  
Filed At. \_\_\_\_\_  
Object Ident. \_\_\_\_\_  
Ident. By \_\_\_\_\_

*Signature*

**PLANE COORDINATE POSITION DATA**

State \_\_\_\_\_ Zone \_\_\_\_\_  
X \_\_\_\_\_  
Y \_\_\_\_\_  
Estab. By \_\_\_\_\_

*Agency*

Signature  
T. Hollamon

Title  
Eng Tech

Division \_\_\_\_\_

Headquarters \_\_\_\_\_

Date  
11/12/76

7100-52-(3/68)

**CORNER RECORD (PERPETUATION)**

**MONUMENT: DESCRIBE NEW MONUMENT SET, OR WORK DONE TO PRESERVE EXISTING MONUMENT**

9

**ACCESSORIES : DESCRIBE NEW BT'S WITNESS OBJECTS ETC, ESTABLISHED, OR WORK DONE TO PRESERVE EXISTING EVIDENCE**

10

Work Done By \_\_\_\_\_ Title \_\_\_\_\_ Date \_\_\_\_\_ State Registration No. or Agency \_\_\_\_\_

Certified Cor. Record Prepared ? Yes No Filed At \_\_\_\_\_ Date \_\_\_\_\_

11

**REMARKS**

Original notes say corner fell near center of Camas Crk and an offset corner was established 125 links east.

12

Index File No. \_\_\_\_\_ T. \_\_\_\_\_ R. \_\_\_\_\_ M. \_\_\_\_\_ Tract or Surv. No. \_\_\_\_\_ Cor. \_\_\_\_\_

13