

Index

File No. C-1

## CORNER RECORD (SEARCH)

(Ref. FSM 7151.4)

Tract or  
Survey No. \_\_\_\_\_Cor.  
No. \_\_\_\_\_T 5S

R. \_\_\_\_\_

30E

R.D. \_\_\_\_\_

Ukiah

County \_\_\_\_\_

Merid. W.M.

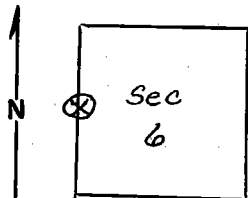
N.F. \_\_\_\_\_

Umatilla

State \_\_\_\_\_

Oregon

## CORNER DIAGRAM



## DESCRIBE CORNER MONUMENT FOUND

Found a stone 14x10x7 marked 1/4. Above ground, in good condition.

## DESCRIBE BEARING TREES OR OTHER OFFICIAL ACCESSORIES FOUND

A ponderosa pine 9.8' distance bearing N 86° W that has an attention sign attached to it has no scribing. It is 32" DBH. Other tree that had an attention sign attached to it that is 11" in DBH has blown down and is about 13' distance SE of stone had no scribing that we could detect for sure.

## PHOTO IDENTIFICATION DATA

Photo No. \_\_\_\_\_

Filed At. \_\_\_\_\_

Object Ident. \_\_\_\_\_

Ident. By. \_\_\_\_\_

Signature

## PLANE COORDINATE POSITION DATA

State \_\_\_\_\_ Zone \_\_\_\_\_

X \_\_\_\_\_

Y \_\_\_\_\_

Estab. By \_\_\_\_\_

Agency

Signature

M.L. Christian

Title

F.T.

Division \_\_\_\_\_

Headquarters \_\_\_\_\_

Date

5/4/76

7100-52-(3/68)

5

CORNER RECORD (PERPETUATION)

MONUMENT: DESCRIBE NEW MONUMENT SET, OR WORK DONE TO PRESERVE EXISTING MONUMENT

9

ACCESSORIES: DESCRIBE NEW BT'S WITNESS OBJECTS ETC. ESTABLISHED, OR WORK DONE TO PRESERVE EXISTING EVIDENCE

Painted stone red and drove a steel post with metal tags, attached 2½' west of stone.

10

Work Done By \_\_\_\_\_ Title \_\_\_\_\_ Date \_\_\_\_\_ State Registration No. \_\_\_\_\_  
or Agency \_\_\_\_\_

Certified Cor. Record Prepared ? Yes No Filed At: \_\_\_\_\_ Date \_\_\_\_\_ 11

REMARKS

Notes we had didn't fit trees that had attention signs attached to them. Couldn't see any scribing on either tree for sure. Didn't mark either tree.

12

Index File No. T. R. M. Tract or Surv. No. Cor. 13