

OREGON CORNER RESTORATION FORM

Section 36 Township 5 N Range 34 E

County Umatilla Date 1-27-88

2-23

CORNER DESIGNATION

- Condition Report Only
- Not Found
- Renewed
- Unrecorded
- Surveyed In
- Referenced Out

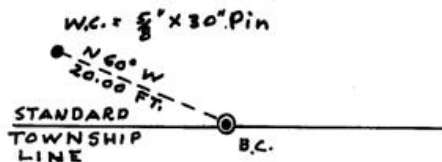
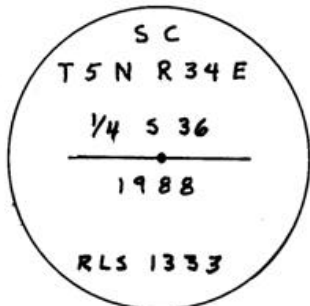
Previous Renewals/Surveys, etc. Originally a post, pits and mounds
(1865)

Monument(s) & Accessories Found: (Condition and Source)

None

Monument Detail

Sketch



Monument Set (Procedures and Description)

Set 1" x 30" G.I.P. w/flared base and 2 1/2" brass cap 12" below
the surface of a cultivated field.

New Accessories

A witness monument bears N 60° W - 20.00 Feet.
Witness monument is a 5/8" x 30" rebar with a red plastic cap
marked R.L.S. 1333. Set a steel fence post near W.C. with
yellow witness sign attached.

Location & Comments

Corner is south
approx. 6 or 8 feet
from a plowline
running E. - W.

Compass Declination
Firm/Agency Don Staebler
Engineer - Surveyor
Address 1532 S. W. 41st
Pendleton, OR 97801
Party Chief Don Staebler

Surveyor's Seal

**REGISTERED
PROFESSIONAL
LAND SURVEYOR**

Donald L. Staebler

**OREGON
SEPT. 23, 1977
DONALD L. STAEBLER
#1333**

RECEIVED BY

Umatilla County Surveyor
Date 2-88
Rec'd by RA
No. 88-9-A

Notes
Witness