

**OREGON CORNER RESTORATION FORM**

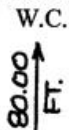
COUNTY: Umatilla DATE: 04/01/04

CORNER DESIGNATION: X-13, The West One-Quarter Corner of Section 34, T5N., R33E., W.M.

PREVIOUS RENEWALS/SURVEYS ETC.: Corner originally established by William H. Odell and William L. Lewis, U.S. Deputy Surveyors under Contract No. 110, dated February 7, 1865. Record states: Set 1/4 Sec. post. Drove charred stake; dug pits and raised mound as per instructions.

MONUMENT AND ACCESSORIES FOUND: None. Corner position was determined by single proportionate measurement, midway between the reestablished Northwest and Southwest Corners of Section 34. There are no field lines at the corner point—it is in a farmed area. Corner point lines up reasonably well with field lines extending East and South, starting about 100 to 150 feet from the corner point.

MONUMENT MARKING DETAIL:



T5N R33E  
1/4  
S33 | S34  
2004  
PLS 1106

MONUMENT SET: To avoid farmed field, set a Witness Corner monument S 00°35'38" E, 80.0 feet from true corner point. True corner falls on a south slope with poor soil. Set a 2 1/2" brass cap (marked as shown in "Monument Marking Detail"), on a 1 1/4" x 30" galvanized iron pipe, 44" in the ground. Top of brass cap is 14" below ground level.

New accessories to witness corner monument:

- A silver "Deep-1 Magnet" buried 20" below ground level bears N 44° E, 35.1 feet.
  - A 5/8" x 30" rebar with yellow plastic cap marked "OR PLS 1106, WA PLS 17372", set flush with ground bears S 24° W, 71.2 feet.
  - A 5/8" x 30" rebar with yellow plastic cap marked "OR PLS 1106, WA PLS 17372" set flush with ground bears S 62° W, 95.8 feet.
  - A orange "Deep-1 Magnet" buried 20" below ground level bears N 70° W, 39.7 feet.
- Attached bearing object signs to iron rebar accessories. Buried bearing object signs with Deep-1 Magnets. Set steel fence post with witness sign attached S 27° W, 26.5 feet from witness corner monument.

LOCATION AND COMMENTS: Witness corner falls in a farmed draw, course NE.

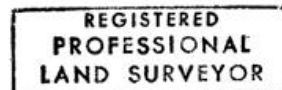
FIRM: William R. Wells, PLS  
P.O. Box 1696  
Pendleton, OR 97801

COMPASS DECLINATION: 18° East Surveyor's Seal

Witnesses: Jason Wells, LSIT  
Mark Hammersla

15N33X13

RECEIVED BY  
Umatilla County Surveyors  
Date 4-04  
Rec'd By KK  
No. 04-76-B



*William R. Wells*  
OREGON  
JULY 22, 1977  
WILLIAM R. WELLS  
1106  
renews 6-30-04