

OREGON CORNER RECONSTRUCTION FORM

Section 9 Township 5N Range 33
 County Umatilla Date: June 9, 1999

Corner Designation: 5N33E9

Condition Report Only
 Not found

Corner to sections 4, 5, 8 and 9, T5N, R33E W.M.

Remonumented
 Unrecorded
 Surveyed in
 Referenced out

Previous Renewals / Surveys, etc.

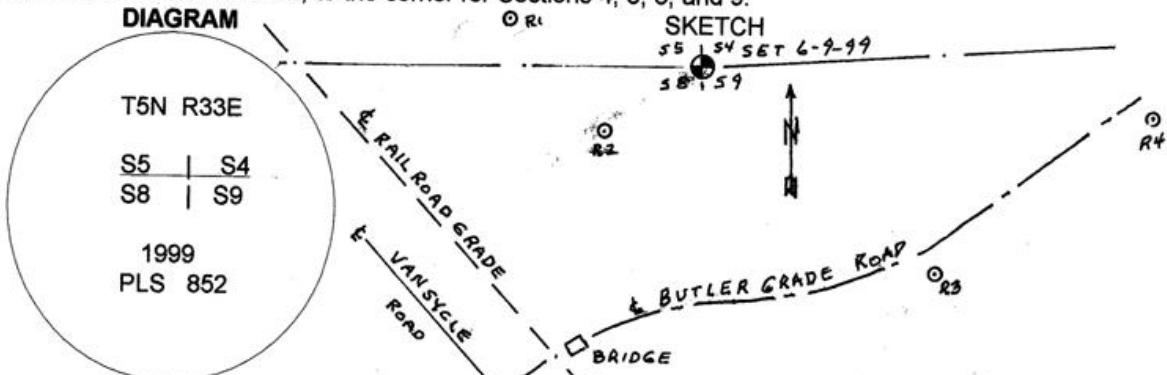
Corner originally set by Odell and Lewis under contract 110 dated Feb. 7, 1865. Their record reads: 80.00 Set post and pits for corner to Sections 4, 5, 8 and 9.

John Arnold found the post and replaced it with a stone 18x12x6 Mar. 21, 1892. He also found and replaced the corner of Sections 5, 6, 7 and 8 with a stone. Arnold's survey is recorded in Book 1as Survey 52 of the Umatilla County Surveyor's records. Arnold also ran the line between Sections 5 and 8 recording the distance where the section line crossed the railroad tracks.

David Krumbein found Arnold's stone corner to Sections 5, 6, 7 and 8 and set a brass cap there under Umatilla County Survey 86-119-C.

Monument and Accessories found: (condition and source)

The point for the corner of Sections 4, 5, 8 and 9 fell in a plowed wheat field. No trace of the original post or Arnold's stone were found. However, the location of the railroad grade was easily discernable and Krumbein's brass cap at the corner of Sections 5, 6, 7 and 8 was found. The position of the corner for Sections 4, 5, 8 and 9 was determined by intersecting Arnold's record distance with the railroad grade centerline and projecting this line, Arnold's record distance, to the corner for Sections 4, 5, 8, and 9.



MONUMENT (S) AND ACCESSORIES SET (Procedures and Description)

At the computed point, I set a 1 1/4" x 30" Galvanized Iron Pipe with a 2 1/2" brass cap stamped as shown in the diagram above. The top of the cap is 2 feet below the ground. For references, I set two 5/8" by 24" iron rebars with 2" Al caps stamped ORLS 852 and WALS 13922 as described below:

A reference bears N71°14'50"W, 286.35 feet about 25 feet west of the field plow line.

A reference bears S60°35'04"W, 163.07 feet about 5 feet west of the field plow line.

The field dropped off to the east and was not visible from the corner. Therefore, two of the pins used for the land partition which initiated this survey were used as references because they were visible from the corner monument. They are 5/8"x24" iron rebars with 1.25" red plastic caps stamped ORLS0852 and WALS 13922 as described below:

A reference bears S51°24'07"E, 404.03 feet. A reference bears S85°36'22"E, 594.95 feet.

Both these references are on the right of way line which is 30 feet south of the centerline of the Butler Grade Road.

Monument and reference locations were surveyed with a Leica System 300 GPS.

Bearings and distances are true.

Location and comments

RECEIVED BY:

Umatilla County Surveyor

Date: 6-99

Rec'd By: KK

No. 99-114-B

Compass Declination N20°E

Firm / Agency

Haddock Surveying

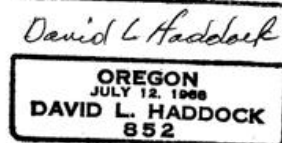
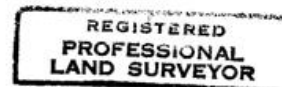
P.O. Box 1574

Pendleton, Or. 97801

Party Chief

David L. Haddock

Surveyors Seal



RENEWS 6/30/01