

OREGON CORNER RESTORATION FORM

Section 33, 34 Township 5N Range 30E
 County Umatilla Date: 05-08-2006

Corner Designation: 5N30E X13

Condition Report Only
 Not Found
 Remonumented
 Unrecorded
 Surveyed In
 Referenced Out

Previous Renewals / Surveys, etc.

08-1861 D.Payne GLO(100) "Set Charred Stake with mound trench and pits"

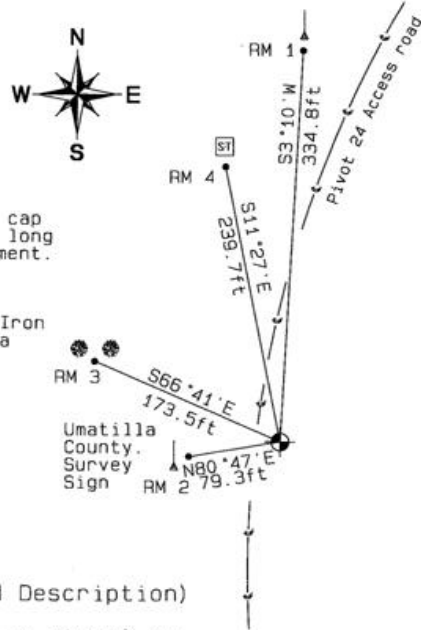
Monument and Accessories Found: (condition and source)

None

DIAGRAM



- Wire Fence line
- Set 2-3/8" dia. Brass cap on a 1-1/4" ID x 30" long Galvanized pipe monument.
- Sage bush
- 5/8" dia. x 24" long Iron Rebar with a 1.3" dia Red Plastic cap.
- 5 foot T-Post
- Granite stone



MONUMENT (S) AND ACCESSORIES SET (Procedures and Description)

Set a 2-3/8" dia. Brass Capped monument (stamped as shown) on a 1-1/4" ID x 30" long galvanized pipe 22" below surface. Set a Umatilla County Survey Marker sign on 5' steel T-Post. Facing East toward corner. Corner located in the West edge of a pivot # 24.

REFERENCES SET:

Set four (5/8" dia x 24" long Iron rebar with a 1.3" dia. Red plastic cap) to the bearings and distances from monument shown above in the sketch.

Made GPS tie to TRI Stations
 LAURILA RESET RB 1379 and
 WALLS RB 1396
 Latitude 45°52'16.305667"N
 Longitude 119°03'27.819832"W
 NAD 83(1991)

Oregon State Plane Coord. - North Zone
 Northing 807014.00
 Easting 8569464.55
 Ortho Height 878.05
 Ellipsoidal Height 808.67

Location and Comments

Compass Declination
 18°E

Surveyors Seal

A pivot layout map available from JSH Farms office located 1.5 miles SouthEast of HWY 37 and Walls road (County road 1258). Beginning 1.5 miles West of HWY 37 and the S. Fork Cold Springs Road. Thence South on Umatilla County Road 1172 (KOSMOS RD) 0.75 miles. Thence West through field access gate. Thence along Pivot #23 North edge, thence along the access road to Pivot #24 North edge to the West access road to the corner in the West edge of Pivot #24.

RECEIVED BY:

Firm / Agency

Date: 05-06
 Rec'd By: _____
 No.: 06-263-C

Haddock Surveying
 P. O. Box 1574
 Pendleton, OR 97801
 (541) 276-2174

REGISTERED
 PROFESSIONAL
 LAND SURVEYOR

David L. Haddock

OREGON
 JULY 12, 1968
 DAVID L. HADDOCK
 852