

OREGON CCNER RESTORATION FORM

Section 26.35 Township 5N Range 30E
 County Umatilla Date: 09-13-2006
 Corner Designation: 5N30E V19

Condition Report Only
 Not Found
 Remonumented
 Unrecorded
 Surveyed In
 Referenced Out

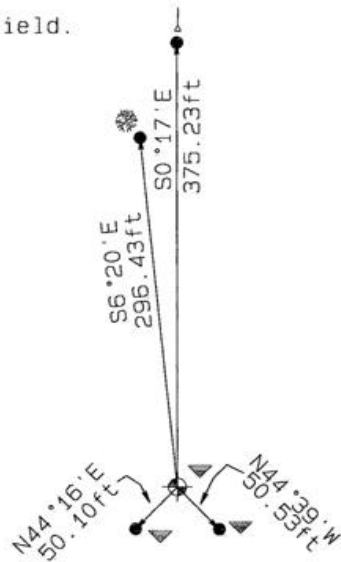
Previous Renewals / Surveys, etc. _____

08-1861 S.Payne - Subdv (100) "Set-charred stake with mound trench and pits as per instrs for 1/4 sec. corner."

Monument and Accessories Found: (condition and source)

Searched for and did not find charred stake. Plowed field.

DIAGRAM



▼ Buried 24" below surface of the ground.

- ☼ 4' Sage bush
- ↓ 5' steel t-post with a UCSM sign facing South.
- ⊕ Set 2-3/8" dia. Brass cap on a 1-1/2" x 30" long Galvanized pipe monument.
- 5/8" dia. x 30" long Iron Rebar with a 1.3" dia. Red plastic cap.

MONUMENT(S) AND ACCESSORIES SET (Procedures and Description)

Set a 2-3/8" dia. Brass Capped monument (stamped as shown) on a 1-1/4" ID x 30" long galvanized pipe 24" below the ground surface. Set a Umatilla County Survey Marker sign 12" North of the Northern RM facing South.

REFERENCES SET:

Set four (5/8" dia x 30" long Iron rebar with a 1.3" dia. Red plastic cap) to the bearings and distances from monument shown above in the sketch.

Made GPS tie to TRI Stations	Oregon State Plane Coord. - North Zone
LAURILA RESET RB 1379 and	Northing 809750.22
WALLS RB 1396	Easting 8577422.08
Latitude 45°52'42.03463"N	Ortho Height 976.66
Longitude 119°01'34.69850"W	Ellipsoidal Height 907.41
NAD 83(1991)	

Location and Comments Compass Declination Surveyors Seal
 18°E

Beginning 1.5 miles West of HWY 37 and the S. Fork Cold Spring Road. South on Umatilla County Road 1172 (KOSMOS RD) 0.59 miles to a East field access gate. Thence East 0.83 miles to the 1/16th corner. Thence Northwest 0.56 miles through the field gate to the buried corner in the plowed field.

REGISTERED
 PROFESSIONAL
 LAND SURVEYOR

David L. Haddock

OREGON
 JULY 12, 1968
 DAVID L. HADDOCK
 852

RENEWS 6-30-07

RECEIVED BY: Firm / Agency

Date 02-07
 Rec'd By: *DH*
 No.: 07-205-R

Haddock Surveying
 P. O. Box 1574
 Pendleton, OR 97801
 (541) 276-2174