

OREGON CORNER RESTORATION FORM

Section 24, 25 Township 5N Range 30E
 County Umatilla Date: 05-08-2006

Corner Designation: 5N30E R25

Condition Report Only
 Not Found _____
 Remonumented _____
 Unrecorded _____
 Surveyed In _____
 Referenced Out _____

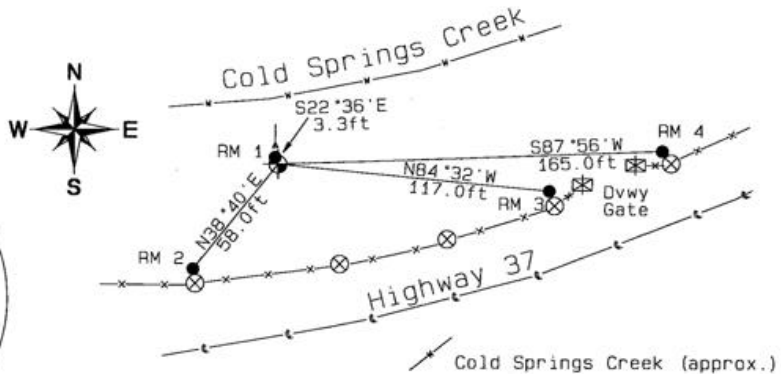
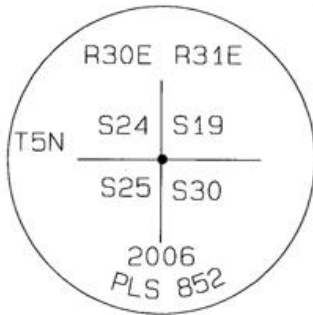
Previous Renewals / Surveys, etc.

- 08-1859 D.Thompson GLO (81) "Set post for corner to secs 24, 25, 19 & 30 and build mound of Earth with pits & trench"
- 08-1861 S.Payne - Subdv (100) "Intersect Town line 13 links North of post corner to secs 24, 25"
- 08-1934 ODOT F-4 (Dwg 5B-1-1) Corner indicated found on map
- 12-1974 D.Krumbein (I-168-B) "Found Brass Cap"
- 06-1979 L.Jones (Q-1129-C) "Brass cap FD by Harris on 12/12/74 Survey"

Monument and Accessories Found: (condition and source)

Fnd 1-1/2"dia. x 66" long steel pipe 18" protuding and bend over 30° West. Top was flared as if to have held a brass disk. A rock crib was around the iron pipe. Brass disk not found.

DIAGRAM



- ⊗ 5" dia. Wood fence post
- 5/8" dia. x 24" long Iron Rebar with a 1.3" dia. Red plastic cap.
- ⊠ Brown Steel tube gate and RR Tie posts.
- ⋈ Wire Fence line
- ⊙ Set 2-3/8" dia. Brass cap on a 1-1/2" x 30" long Galvanized pipe monument.
- ⌄ 5' Steel T-post with a Umatilla County Survey Sign.

MONUMENT(S) AND ACCESSORIES SET (Procedures and Description)

Set a 2-3/8" dia. Brass Capped monument (stamped as shown) on a 1-1/4" ID x 30" long galvanized pipe flush with the ground surface. Set a 5' steel T-Post with a Umatilla County Survey Marker sign facing South toward the monument. Buried 5.5' Iron pipe South of monument and Stones around base of monument. Built 2' dia rock crib around monument.

REFERENCES SET:

Set four (5/8" dia x 24" long Iron rebar with a 1.3" dia. Red plastic cap) to the bearings and distances from monument shown above in the sketch.

Made GPS tie to TRI Stations	Oregon State Plane Coord. - North Zone
LAURILA RESET RB 1379 and	Northing 815179.55
WALLS RB 1396	Easting 8585209.97
Latitude 45°53'34.071251"N	Ortho Height 857.90
Longitude 118°59'43.181866"W	Ellipsoidal Height 788.74
NAD 83(1991)	

Location and Comments Compass Declination Surveyors Seal
 18°E

Proceed NorthEast from the junction of HWY 37 and South Cold Springs Highway approximately 0.63 miles. Located on the North side of the highway.

REGISTERED
 PROFESSIONAL
 LAND SURVEYOR

RECEIVED BY: Firm / Agency

David L. Haddock

Date 05-06
 Rec'd By: _____
 No.: 06-263-C

Haddock Surveying
 P. O. Box 1574
 Pendleton, OR 97801
 (541) 276-2174

OREGON
 JULY 12, 1968
 DAVID L. HADDOCK
 852

RENEWS 6-30-07