

OREGON COUNTY RESTORATION FORM

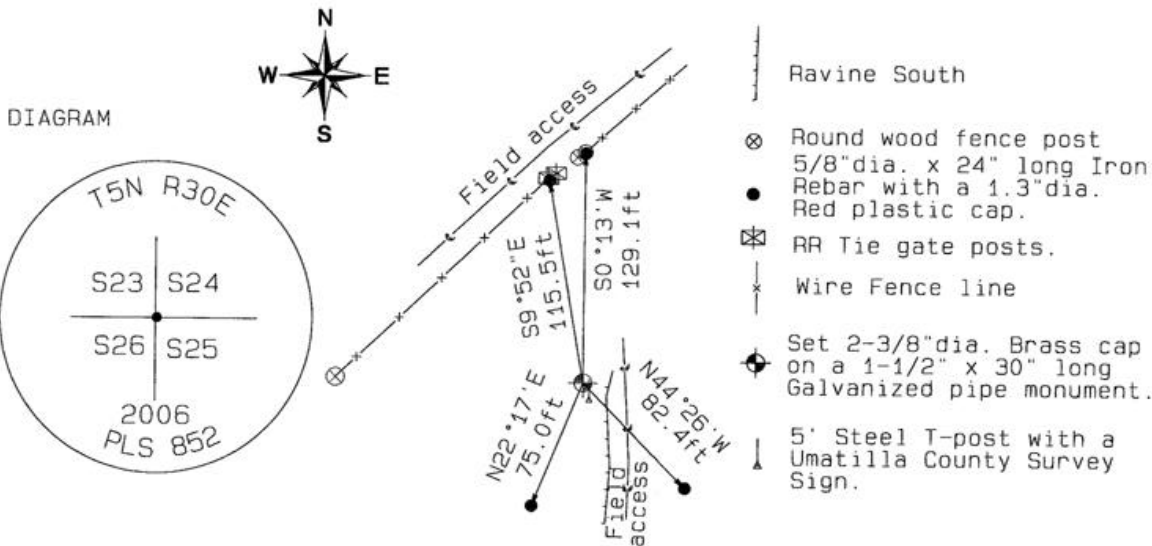
Section 23, 24, 25, 26 Township 5N Range 30E
 County Umatilla Date: 05-08-2006

Corner Designation: 5N30E R21

Condition Report Only
 Not Found
 Remonumented
 Unrecorded
 Surveyed In
 Referenced Out

Previous Renewals / Surveys, etc.
 12-1861 S. Payne - Subdv (100) "Set charred stake with mound trench and pits as per instrct's for corner to secs 23, 24, 25, 26."
 12-1861 S. Payne - Subdv (100) "Intersect Sec line 18 links North of post-corner to secs 23, 24, 25, 26."
 08-1934 ODOT J.A. Phelps (Dwg 5B-1-1) 2289.1' to Sec. Cor. (Indorsed R.R.Tie)
 10-1940 ODOT (Dwg 5B-29-11) "R.R.Tie" with corner indicated on map

Monument and Accessories Found: (condition and source)
 R.R.Tie, wood post or charred stake not found. Fence line and gate are new.



MONUMENT (S) AND ACCESSORIES SET (Procedures and Description)

Set a 2-3/8" dia. Brass Capped monument (stamped as shown) on a 1-1/4" ID x 30" long galvanized pipe flush with the ground surface.
 Set a 5' steel T-Post with a Umatilla County Survey Marker sign facing North, one foot South of the monument.

REFERENCES SET:

Set four (5/8" dia x 30" long Iron rebar with a 1.3" dia. Red plastic cap) to the bearings and distances from monument shown above in the sketch.

Made GPS tie to TRI Stations	Oregon State Plane Coord. - North Zone
LAURILA RESET RB 1379 and	Northing 815124.63
WALLS RB 1396	Easting 8580043.50
Latitude 45°59'29.81123"N	Ortho Height 968.05
Longitude 119°00'46.86122"W	Ellipsoidal Height 898.51
NAD 83(1991)	

Location and Comments Compass Declination Surveyors Seal
 18°E

Proceed Northwest from the junction of HWY 37 and South Cold Springs Highway approximately 0.25 miles. Thence North past the BM#B18 at the base of Cold Spring Ranches silo along the field access road. North 0.5 miles to the left fork of "Y" junction. Proceeding West 0.3 miles over the top of the ridge to the wire gate of a N/S bobwire fence line. Through the gate and Southwest along the dirt road to the R.R.Tie gate to the East.

REGISTERED
 PROFESSIONAL
 LAND SURVEYOR

David L. Haddock

OREGON
 JULY 12, 1968
 DAVID L. HADDOCK
 852

RENEWS 6-30-07

RECEIVED BY: Firm / Agency
 Date 12-06 Haddock Surveying
 Rec'd By: *DH* P. O. Box 1574
 No.: *07-203-R* Pendleton, OR 97801
 (541) 276-2174