

OREGON CORNER RESTORATION FORM

SECTION 33 TOWNSHIP 5N RANGE 29E Z-13

COUNTY: UMATILLA DATE 4/90

CORNER DESIGNATION

Southeast Corner

- CONDITION REPORT ONLY
- NOT FOUND
- RENEWED
- UNRECORDED
- SURVEYED IN
- REFERENCED OUT

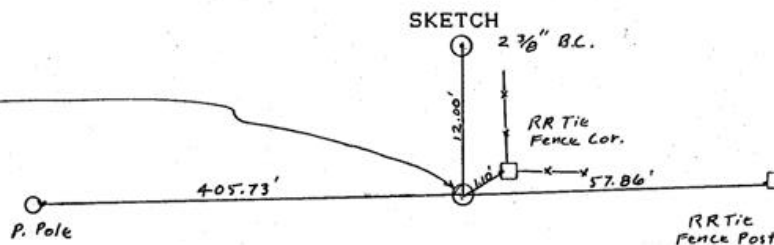
PREVIOUS RENEWALS/SURVEYS, ETC.

Originally surveyed under contract #101 by Davenport 1861. He set post made mound and drove charred stake as per instructions.

MONUMENTS & ACCESSORIES FOUND: Condition and Source

Found 1 1/4" iron pipe .3 foot below the surface at a fence corner. Origin unknown but could be from Co. Surveyor Kimbrell era of 1910. It was used by Staebler in 1975 Co. Survey # K-7-B.

MONUMENT DETAIL



MONUMENT SET (PROCEDURES AND DESCRIPTION)

Set a 2 1/2" Brass cap stamped as above in concrete in top of existing 1 1/4" iron pipe.

NEW ACCESSORIES

- from which
- 1"x30" l. pipe with 2 3/8" BC bears North 12.00 feet.
- alum. tag in RR tie FP bears N 59° 03' 40" E 1.10 feet.
- alum. tag in RR tie FP bears N 88° 35' 40" E 57.86 feet.
- alum. tag in P.pole bears S88° 59' 50" W 405.73 feet.

LOCATION & COMMENTS

From intersection of Edwards Rd. N. & Punkin Cent. Rd. go East on P.C. Rd. 1 mile. Then Sly across RR tracks on gravel rd. 600 ft + - Cor is at Fence corner.

COMPASS DEC. FIRM EDWARDS SURVEYING P.O. BOX 763, HERMISTON, OREGON, 97838 PARTY CHIEF D. EDWARDS NOTES WITNESS J. COPPOCK

SURVEYOR'S SEAL

REGISTERED PROFESSIONAL LAND SURVEYOR

G. Dennis Edwards

OREGON JULY 18, 1971 G. DENNIS EDWARDS 951