

OREGON CORNER RESTORATION FORM

SECTION 33 TOWNSHIP 5N RANGE 29E Z-11

COUNTY: UMATILLA DATE 4/90

CORNER DESIGNATION

South 1/4 Corner

- CONDITION REPORT ONLY
- NOT FOUND
- RENEWED
- UNRECORDED
- SURVEYED IN
- REFERENCED OUT

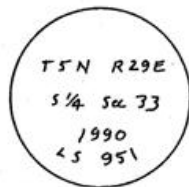
PREVIOUS RENEWALS/SURVEYS, ETC.

Originally surveyed by Davenport under contract #101 in 1861. Staebler set a 5/8" rebar in 1975 Co. Sur. # K-7-B.

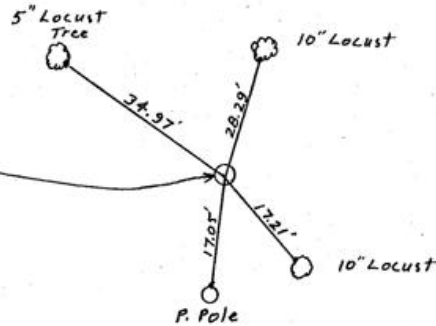
MONUMENTS & ACCESSORIES FOUND: Condition and Source

Found 5/8" rebar flush with paved surface of road.

MONUMENT DETAIL



SKETCH



MONUMENT SET (PROCEDURES AND DESCRIPTION)

Set a 1"x30" iron pipe with 2 3/8" BC, stamped as above, over the 5/8" rebar and flush with the pavement.

NEW ACCESSORIES

from which

- alum. tag in 10" Locust tree bears N 16° 28' 30" E 28.29 ft.
- alum. tag in 10" Locust tree bears S 41° 34' E 17.21 feet.
- alum. tag in p. pole bears S 6° 42' 40" W 17.05 feet.
- alum. tag in 5" Locust tree bears N 55° 18' W 34.97 feet

LOCATION & COMMENTS

From intersection of Edwards Rd. N. & Punkin Center Rd. go East on Punkin Center .5 mile to corner

COMPASS DEC.
FIRM EDWARDS SURVEYING
 P.O. BOX 763, HERMISTON,
 OREGON, 97838
PARTY CHIEF D. EDWARDS
NOTES
WITNESS J. COPPOCK

SURVEYOR'S SEAL

**REGISTERED
 PROFESSIONAL
 LAND SURVEYOR**

G. Dennis Edwards
OREGON
 JULY 16, 1971
G. DENNIS EDWARDS
 951