

OREGON CORNER RESTORATION FORM

SECTION 33 TOWNSHIP 5N RANGE 29E V-9

COUNTY: UMATILLA DATE 6/90

CORNER DESIGNATION

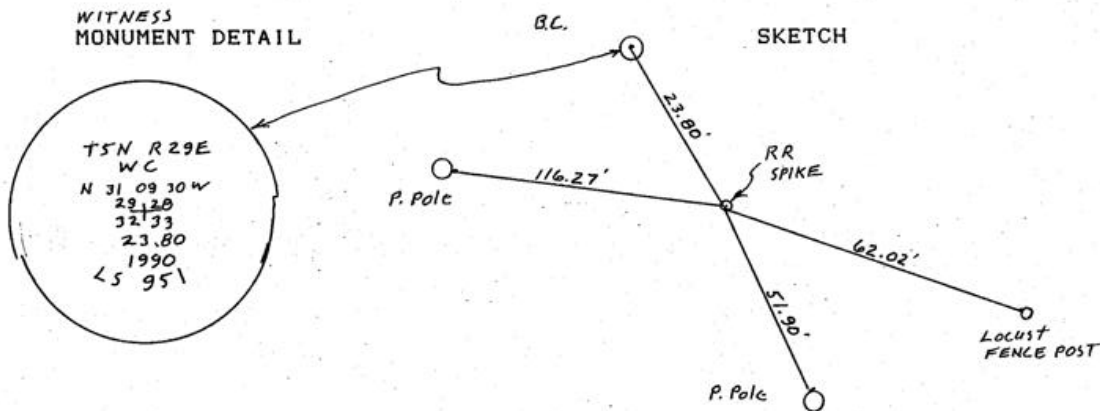
NW Corner

- CONDITION REPORT ONLY
- NOT FOUND
- RENEWED
- UNRECORDED
- SURVEYED IN
- REFERENCED OUT

PREVIOUS RENEWALS/SURVEYS, ETC.

In 1979 I set a RR spike at Loc. of a hex bolt which had been used in many previous surveys. Orig. unknown. See Co. Sur. #R-11-A. In 1981 Hanby (Co. Sur. #S-42-B) used RR spike for Cor. and it fit well with other monuments (2 & 3" iron pipes) fnd. at G.L.O. corners of Sec. 33.

MONUMENTS & ACCESSORIES FOUND: Condition and Source nothing found



MONUMENT SET (PROCEDURES AND DESCRIPTION)

By retracing Hanbys Survey S-423-B and my survey R-11-A in Sec. 29 I set a RR spike in the travel lane of heavily traveled Hwy # 207. See Co. Partition Plat # 1990-4

NEW ACCESSORIES

from which
 1"x30" I. pipe with 2 3/8" BC bears N 31° 09' 30" W 23.80 ft.
 alum. tag in locust fence post bears S73° 28' 30" E 62.02 ft.
 alum. tag in P. pole bears S 27° 10' 45" E 51.90 feet.
 alum. tag in P. pole bears N 84° 19' 13" W 116.27 feet.

LOCATION & COMMENTS

At the intersection of Walls, Edwards, & Diagonal Roads.

COMPASS DEC.
 FIRM EDWARDS SURVEYING
 P.O. BOX 763, HERMISTON,
 OREGON, 97838
 PARTY CHIEF D. EDWARDS
 NOTES
 WITNESS J. COPPOCK

SURVEYOR'S SEAL

REGISTERED
 PROFESSIONAL
 LAND SURVEYOR

G. Dennis Edwards

OREGON
 JULY 16, 1871
 G. DENNIS EDWARDS
 951

90-58-B