

OREGON CORNER RESTORATION FORM

SECTION 33 TOWNSHIP 5N RANGE 29E

V-11

COUNTY: UMATILLA DATE 5/90

CORNER DESIGNATION

North 1/4 Corner

- CONDITION REPORT ONLY
- NOT FOUND
- RENEWED
- UNRECORDED
- SURVEYED IN
- REFERENCED OUT

PREVIOUS RENEWALS/SURVEYS, ETC.

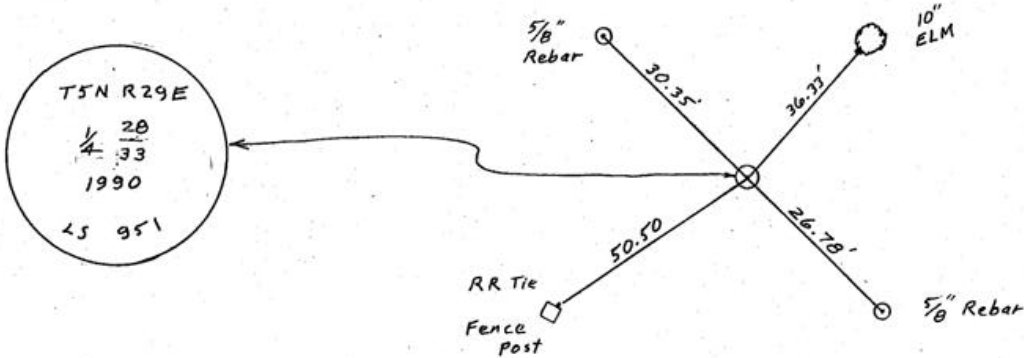
Originally surveyed in 1861 by Davenport under contract #101. He set post made mound and drove charred stake as per instructions.

MONUMENTS & ACCESSORIES FOUND: Condition and Source

Fnd. 3" l. pipe 1.0 foot below the surface of paved road. Origin unknown but it is the type of monument County Surveyor Kimbrell set in the time period centered around 1913. Many surveyors have used it and it fits improvements well. See Staebler's 1975 survey Co. # K-7-B.

MONUMENT DETAIL

SKETCH



MONUMENT SET (PROCEDURES AND DESCRIPTION)

I set a 2 1/2" brass disk in 8" Concrete over the iron pipe flush with the pavement stamped as above.

NEW ACCESSORIES

- alum. tag in 10" elm tree bears N42° 57' 50" E 36.33 feet.
- a 5/8" rebar bears N 45° 12' W 30.35 feet.
- alum. tag in RR tie f.p. bears S 57° 46' W 50.50 feet
- a 5/8" rebar bears S45° 25' E 26.78 feet.

LOCATION & COMMENTS

From intersection of Diagonal Rd. with Walls Rd. go East on Walls .5 mile to corner.

COMPASS DEC.

FIRM EDWARDS SURVEYING P.O. BOX 763, HERMISTON, OREGON, 97838

PARTY CHIEF D. EDWARDS

NOTES

WITNESS J. COPPOCK

SURVEYOR'S SEAL

REGISTERED PROFESSIONAL LAND SURVEYOR

G. Dennis Edwards

OREGON JULY 16, 1971 G. DENNIS EDWARDS 951

90-58-B