

OREGON CORNER RESTORATION FORM

Section 19 Township 5N Range 29E

P-5

County UMATILLA Date 4/23/98

CORNER DESIGNATION

E 1/4



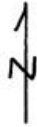
- Condition Report Only
- Not Found
- Renewed
- Unrecorded
- Surveyed In
- Referenced Out

Previous Renewals/Surveys, etc. TIMOTHY DAVENPORT SET POST, MADE MOUND, AND DROVE CHARRED STAKE, CONTRACT NO. 101, AUG. 5, 1861; RICHARD ROGERS SET BPA ALUMINUM CAP, CS# 95-41-B, BY SINGLE PROPORTION.

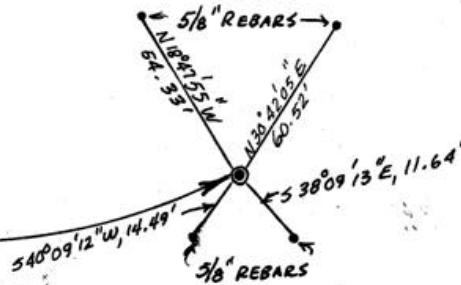
Monument(s) & Accessories Found: (Condition and Source)

NO ORIGINAL EVIDENCE OF CORNER WAS FOUND. ROGERS' ALUMINUM CAP WAS NOT FOUND.

Monument Detail



Sketch



Monument Set (Procedures and Description)

SET 2 3/8" BRASS CAP ON 1/4" x 30" G.I.P. BY SINGLE PROPORTION BETWEEN THE BRASS CAP SET BY EDWARDS AT THE NORTHEAST CORNER OF SECTION 19 (CS# 91-58-B) IN THE CENTER OF AN OLD MOUND OF STONES AND THE BRASS CAP SET BY EDWARDS (CS# 91-58-B) OVER A FOUND 2" PIPE. THE CORNER IS SET APPROXIMATELY 6" BELOW GROUND SURFACE.

New Accessories

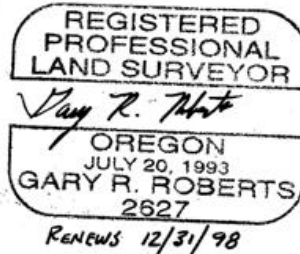
SET 5/8" x 30" REBAR WITH YELLOW PLASTIC CAP MARKED "UMA. CO. R.P. L6 2627" IN EACH QUADRANT. ATTACHED BEARING OBJECT TAGS TO NEARBY FENCE POSTS EXCEPT FOR THE SOUTHEAST QUADRANT PIN, WHERE THE TAG IS ATTACHED TO THE PIN ITSELF.

Location & Comments

FROM THE INTERSECTION OF HIGHWAY 207 AND CRAIG RD, GO NORTH 2 1/2 MILES TO PURDY ROAD INTERSECTION. CORNER LIES APPROXIMATELY 5 FT. SOUTHWEST OF THE FENCE CORNER AT THE SOUTH WEST CORNER OF THE INTERSECTION.

Compass Declination N/A
Firm/Agency UMATILLA COUNTY DEPT. OF PUBLIC WORKS
Address 3920 WESTGATE, PENDLETON, ORE. 97801
Party Chief GARY ROBERTS
Notes WYNELL ROBERTS
Witness WYNELL ROBERTS

Surveyor's Seal



RECORDED BY
 Umatilla County Surveyors
 Date 4-98
 Rec'd By RR
 No. 98-75-R