

OREGON CORNER RESTORATION FORM

SECTION 36 TOWNSHIP 5 NORTH RANGE 27 EAST

X-25

COUNTY : UMATILLA DATE 5/06

CORNER DESIGNATION

E 1/4 CORNER SECTION 36

CONDITION REPORT ONLY

NOT FOUND

RENEWED

UNCOVERED

SURVEYED IN

REFERENCED

PREVIOUS RENEWALS / SURVEYS, ETC.

ORIGINAL GLO SURVEY BY DAVENPORT UNDER CONTRACT #101 IN 1861. SET POST WITH MOUND AND CHARRED STAKE.

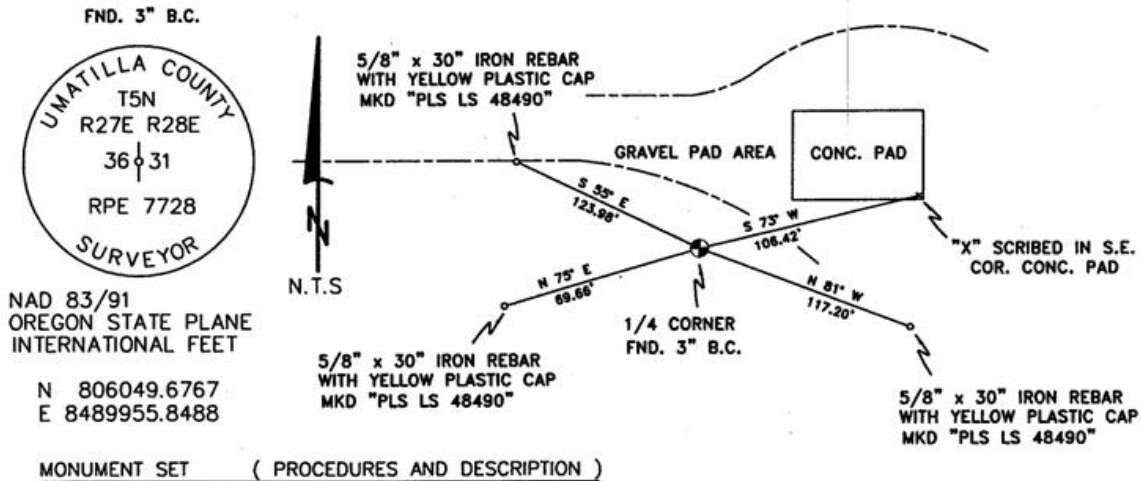
KRUMBEIN FOR BAKER-ROGERS 1973 SURVEY NO. 1-16-C

MONUMENTS AND ACCESSORIES FOUND: CONDITION AND SOURCE

3" B.C. 1/4 CORNER

MONUMENT DETAIL

SKETCH



NEW ACCESSORIES FROM WHICH

AN "X" SCRIBED IN THE S.E. COR OF CONC. PAD LIES N 73° E, 106.42 FEET.
 A 5/8" x 30" IRON REBAR WITH A YELLOW PLASTIC CAP MKD "PLS LS 48490" LIES S 81° E, 117.20 FEET.
 A 5/8" x 30" IRON REBAR WITH A YELLOW PLASTIC CAP MKD "PLS LS 48490" LIES S 75° W, 69.66 FEET.
 A 5/8" x 30" IRON REBAR WITH A YELLOW PLASTIC CAP MKD "PLS LS 48490" LIES N 55° W, 123.98 FEET.

LOCATION AND COMMENTS

FROM THE INTERSECTION OF POWER LINE ROAD AND PTL LANE GO WEST 1.2 MILES TO A LARGE POWER LINE, GO SOUTH DOWN LARGE POWER LINE 0.5 MILE, GO EAST 0.1 MILE TO CORNER.

COMPASS DEC.

17.5 DEG EAST

FIRM/AGENCY

PRIMM LAND SURVEYING LLC
 1340 N.E. 4TH P.O. BOX 1322
 HERMISTON, OREGON 97838

PARTY CHIEF

BRIT L. PRIMM

NOTES

WITNESS

KEITH P. PRIMM
 JOE L. PRIMM

SURVEYOR'S SEAL

REGISTERED
 PROFESSIONAL
 LAND SURVEYOR

Keith P. Primm

OREGON
 JULY 12, 2005
 KEITH P. PRIMM
 48490

EXPIRATION DATE: 12/31/06

06-461-B