

OREGON CORNER RESTORATION FORM

SECTION 29 TOWNSHIP 5N RANGE 28E V-7

COUNTY: UMATILLA DATE 4/90

CORNER DESIGNATION

S 1/4 Corner

- CONDITION REPORT ONLY
- NOT FOUND
- RENEWED
- UNRECORDED
- SURVEYED IN
- REFERENCED OUT

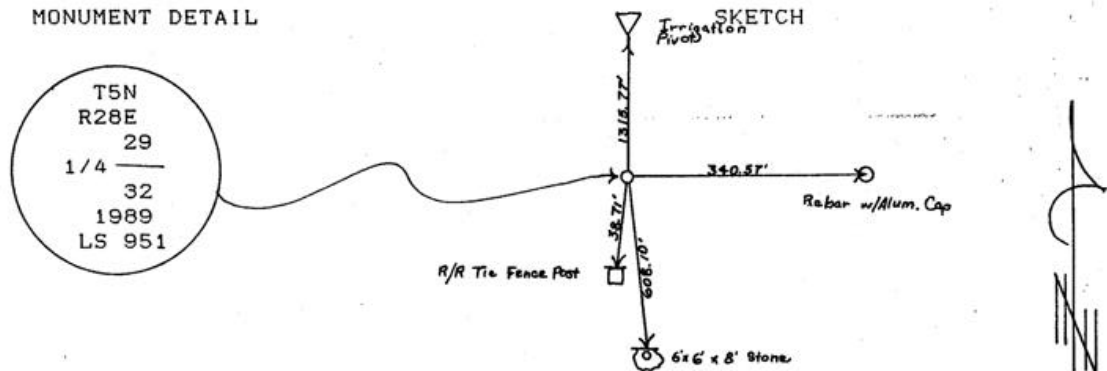
PREVIOUS RENEWALS/SURVEYS, ETC.

Original survey by Davenport in 1861, under Contract #101. He set post.

MONUMENTS & ACCESSORIES FOUND: Condition and Source

Nothing found.

MONUMENT DETAIL



MONUMENT SET (PROCEDURES AND DESCRIPTION)

By single proportion (See County Survey Area One 1989), I set a 2 1/2" Brass Cap Disc, stamped as above, in a 6"x10" concrete cylinder with a 3/4" x 29" Iron rod imbedded. Disc is 20" below surface of cultivated field.

NEW ACCESSORIES

From which Alum. tag #951 in RR tie fence post Bears. S6° 29' 10"W 38.71 feet, with Bearing Object & Witness Cor. sign attached

The center of an irrigation pivot Bears. N0° 21'E 1315.77 feet,

A 1/2" x 24" rebar with Alum. Cap stamped LS 951 Bears. N89° 58' 50" E 340.57 feet, referenced with a steel fence post with Bearing Object & Witness Cor. signs attached,

A PK nail in face of 6' x 6' x 8' rock Bears. S6° 20' 30" E 608.10 feet, with a Bearing Object sign attached to rock.

LOCATION & COMMENTS

From intersection of Power Line Rd. with 1 82, go North on Power Line Rd. 0.7 miles to intersection of a gravel road on West Corner line 0.7 miles East.

Umatilla County Surveyor

COMPASS DEC.  
 FIRM EDWARDS SURVEYING  
 P.O. BOX 763, HERMISTON,  
 OREGON, 97838  
 PARTY CHIEF D. EDWARDS

NOTES  
 WITNESS J. COPPOCK

SURVEYOR'S SEAL

REGISTERED  
 PROFESSIONAL  
 LAND SURVEYOR

*J. Dennis Edwards*

OREGON  
 JULY 16, 1971  
 G. DENNIS EDWARDS  
 951

Date 1-91  
 Rec'd By JA  
 No. 91-01-B