

OREGON CORNER RESTORATION FORM

SECTION 29 TOWNSHIP 5N RANGE 28E T-5

COUNTY: UMATILLA DATE 4/90

CORNER DESIGNATION

W 1/4 Corner

CONDITION REPORT ONLY

NOT FOUND

RENEWED

UNRECORDED

SURVEYED IN

REFERENCED OUT

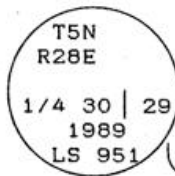
PREVIOUS RENEWALS/SURVEYS, ETC.

Original survey by Davenport under Contract #101 in 1861. He set post.

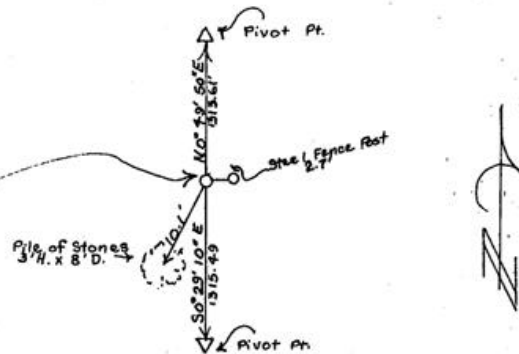
MONUMENTS & ACCESSORIES FOUND: Condition and Source

Nothing found.

MONUMENT DETAIL



SKETCH



MONUMENT SET (PROCEDURES AND DESCRIPTION)

Set a 1" x 30" Iron pipe with 2 3/8" Brass Cap stamped, as above, 9" above surface and placed a mound of stone to Brass Cap. See Area One 1989 Umatilla Co. Survey.

NEW ACCESSORIES

From which

a center pivot Bears NO° 49' 50" E 1313.61 feet,

a center pivot Bears SO° 29' 10" E 1315.49 feet,

a pile of stone Bears S27° 13' W 10.1 feet,

a steel fence post Bears East 2.7 feet.

Attached a Bearing Object & Witness Cor. sign to steel post.

LOCATION & COMMENTS

From Intersection of Power Line Rd. with I 84 go North on Power Line 1.3 miles. Corner lies 0.25 miles West of Power Line between two circles.

SURVEYOR'S SEAL

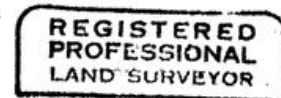
COMPASS DEC.

FIRM EDWARDS SURVEYING  
P.O. BOX 763, HERMISTON,  
OREGON, 97838

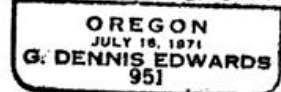
PARTY CHIEF D. EDWARDS

NOTES

WITNESS J. COPPOCK



*G. Dennis Edwards*



RECEIVED BY

Umatilla County Surveyor

Date 1-91

Rec'd By *kt*

No. 91-01-B