

# OREGON CORNER RESTORATION FORM

**Section:** 27 – 28  
**Township:** 5 North  
**Range:** 28 East of the Willamette Meridian  
**County:** Umatilla  
**Date:** January 2024  
**Corner Indexing Information:** Township 5N Range 28E Corner Code T-13 (Willamette Meridian)  
**Additional Identifier:** Quarter corner between Sections 27 & 28

**Oregon Plane Coordinates:** N: 816823.53 E: 8505713.87 **Zone:** North **Order:** Second  
**Datum:** NAD83-2011(epoch 2010) **Convergence:** N00°50'45"W **Scale Factor:** 1.000044268448

**Previous Renewals/Surveys, etc.:**

1861: Post, mound, pits, & charred stake (Davenport, General Land Office Contract #101)  
1917: Set 1" iron pipe 2" above ground by single-proportion between 2" iron pipes found at R-13 & V-13 (Eriksen, G.L.O. Letter 651680 "E" GCC, dated 2/17/1917)  
1988: Set 1" iron pipe with brass cap in sanitary landfill by single-proportion between found monuments at R-17 and V-17; set 1/2" iron rebar witness corners S89°47'02"E 224.43' and S00°06'22"W 109.59'

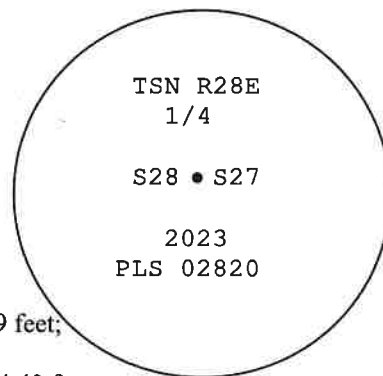
**Monument(s) & Accessories Found (Condition & Source):**

No monument found at true corner; found 5/8" iron rebar in concrete in 24" stone mound 0.5' above surface for southerly witness corner; found 5/8" iron rebar driven into stone for easterly witness corner; both have adjacent T-post & bearing tag.

**Monument Set (Procedures & Description):**

Set a 2-1/2" brass cap on a 1-1/4" pipe 0.6' deep.

**Monument Detail:**



**New Accessories: WE SET:**

A 5/8 iron rebar with plastic cap stamped "PBS WA19619 OR02820" bears S42°06'49"W 65.99 feet from the corner; set T-post & bearing tag alongside.

A 5/8 iron rebar with plastic cap stamped "PBS WA19619 OR02820" bears N48°58'48"E 48.42 feet from the corner; set T-post & bearing tag alongside.

The southerly witness corner was remonumented with a 2-1/2" brass cap marked WC on a 1-1/4" pipe in a stone mound and bears S00°44'44"E 109.59 feet; set T-post & bearing tag alongside.

Found a 5/8" iron rebar driven into stone per C.S. 88-045-C N89°21'32"E 224.40 feet; Set T-post and bearing tag alongside.

**Location & Comments:**

Corner was accessed by Sunshine Drive from the South & East

**Compass Declination:**

All accessories tied with State Plane grid bearings.

**Firm/Agency:** PBS Engineering & Environmental, Inc  
5 N. Colville  
Walla Walla WA 99362

**Witness:** Mark F. Wendover  
Jered M. Clifford  
A.J. Nickels

**Surveyor's Seal**

REGISTERED  
PROFESSIONAL  
LAND SURVEYOR

OREGON  
JUNE 30, 1997  
GREG E. FLOWERS  
02820LS

RENEWS 12/31/2025

2/07/2024