

OREGON CORNER RESTORATION FORM

SECTION 29 TOWNSHIP 5N RANGE 28E R-7

COUNTY: UMATILLA DATE 1/90

CORNER DESIGNATION

N 1/4 Corner

- CONDITION REPORT ONLY
- NOT FOUND
- RENEWED
- UNRECORDED
- SURVEYED IN
- REFERENCED OUT

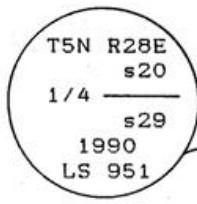
PREVIOUS RENEWALS/SURVEYS, ETC.

Original survey by Davenport in 1861, under Contract #101.

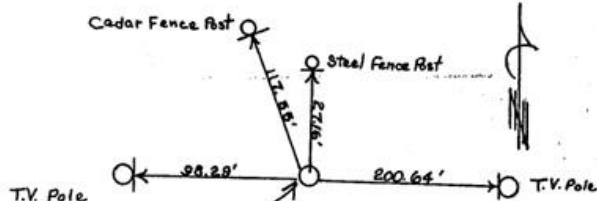
MONUMENTS & ACCESSORIES FOUND: Condition and Source

No evidence found.

MONUMENT DETAIL



SKETCH



MONUMENT SET (PROCEDURES AND DESCRIPTION)

By single proportion set a brass disk 2 1/4" in Dia. in the top of a conc. cylinder 6"x10", 20" below surface, 1/2" rebar driven to rock imbedded into conc. cylinder. Brass disk stamped as shown. SEE 1989 AREA ONE CO. SURVEY.

NEW ACCESSORIES

From which

TV pole w/Alum. Tag #951, Bearing Object sign, W 98.29 ft.  
TV " w/ " " " " " " " N 89° 39' 30" E  
200.64 feet.

A cedar fence post w/Alum. Tag #951, Bearing Object sign attached. N 22° 14' 50" W 117.55 feet.

A steel fence post w/Bearing Object, Witness Corner signs attached. North, 27.16 feet. (DISTANCES TO ALUM. TAGS)

LOCATION & COMMENTS

At the Southerly city limits of Umatilla, OR go South on Powerline Rd. 1 mi., then go East abt. 0.25 mi. to corner which lies in a cultivated circle.

COMPASS DEC.  
FIRM EDWARDS SURVEYING  
P.O. BOX 763, HERMISTON,  
OREGON, 97838  
PARTY CHIEF D. EDWARDS  
NOTES  
WITNESS J. COPPOCK

SURVEYOR'S SEAL

REGISTERED PROFESSIONAL LAND SURVEYOR

*G. Dennis Edwards*

OREGON  
JULY 16, 1971  
G. DENNIS EDWARDS  
951

RECEIVED BY

Umatilla County Surveyor

Date 1-91

Rec'd By KA

No. 91-01-B