

OREGON CORNER RESTORATION FORM

SECTION 24 TOWNSHIP 5 NORTH RANGE 27 EAST

R-25

COUNTY : UMATILLA DATE 5/06

CORNER DESIGNATION

SE CORNER SECTION 24

CONDITION REPORT ONLY

NOT FOUND

RENEWED

UNCOVERED

SURVEYED IN

REFERENCED

PREVIOUS RENEWALS / SURVEYS, ETC.

ORIGINAL GLO SURVEY BY DAVENPORT UNDER CONTRACT #101 IN 1861. SET POST WITH MOUND AND CHARRED STAKE.

EDWARDS FOR UMATILLA COUNTY 1990 SURVEY NO. 91-01-B

KRUMBEIN FOR BAKER-ROGERS 1973 SURVEY NO. 1-16-C

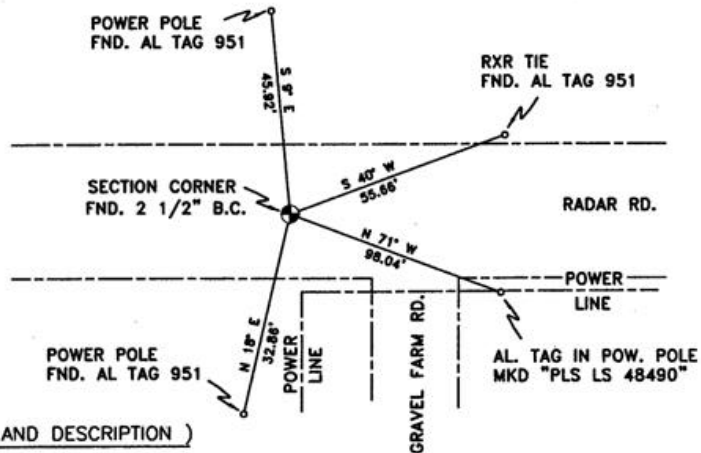
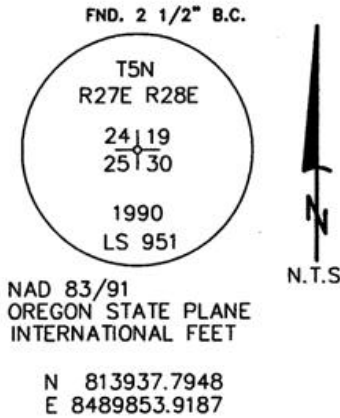
STAEBLER FOR STONE 1972 SURVEY NO. H-106-B

MONUMENTS AND ACCESSORIES FOUND: CONDITION AND SOURCE

2 1/2" B.C. SECTION CORNER STAMPED LS 951
 AN ALUMINUM TAG 951 ON A RXR TIE LIES N 40° E, 55.66 FEET.
 AN ALUMINUM TAG 951 ON A POWER POLE LIES S 18° W, 32.86' FEET.
 AN ALUMINUM TAG 951 ON A POWER POLE LIES N 9° W, 45.92 FEET.

MONUMENT DETAIL

SKETCH



MONUMENT SET (PROCEDURES AND DESCRIPTION)

NEW ACCESSORIES FROM WHICH

AN ALUMINUM TAG "PLS LS 48490" ON A POWER POLE LIES S 71° E, 98.04 FEET.

LOCATION AND COMMENTS

FROM THE INTERSECTION OF POWER LINE ROAD AND RADAR ROAD GO WEST 1.2 MILES TO POWER LINE. CORNER FALLS IN RADAR ROAD.

COMPASS DEC.

17.5 DEG EAST

FIRM/AGENCY

PRIMM LAND SURVEYING LLC
 1340 N.E. 4TH P.O. BOX 1322
 HERMISTON, OREGON 97838

PARTY CHIEF

BRIT L. PRIMM

NOTES

WITNESS

KEITH P. PRIMM
 JOE L. PRIMM

SURVEYOR'S SEAL

REGISTERED
 PROFESSIONAL
 LAND SURVEYOR

Keith P. Primm

OREGON
 JULY 12, 2005
 KEITH P. PRIMM
 48490

EXPIRATION DATE: 12/31/06

06-461-B