

OREGON CORNER RESTORATION FORM

SECTION 22 TOWNSHIP 5N RANGE 28E N-9

COUNTY: UMATILLA DATE 4/90

CORNER DESIGNATION

NW Corner

- CONDITION REPORT ONLY
- NOT FOUND
- RENEWED
- UNRECORDED
- SURVEYED IN
- REFERENCED OUT

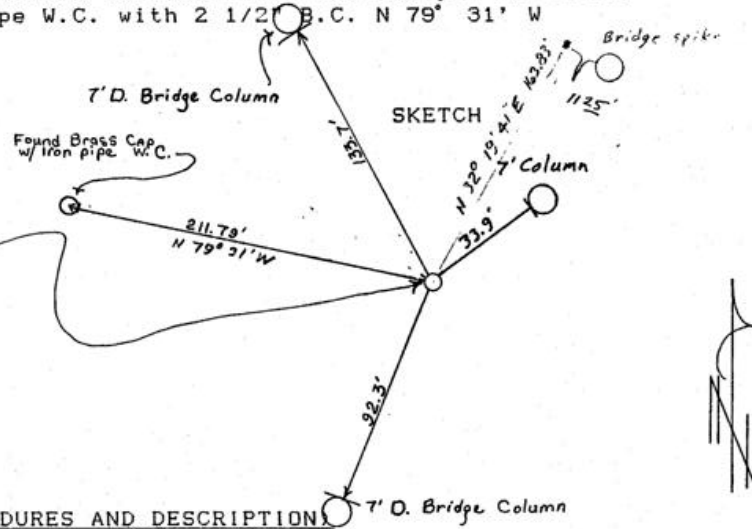
PREVIOUS RENEWALS/SURVEYS, ETC.

Original Survey under contract #101 By Davenport in 1861.  
Dependent Resurvey by Tuers in 1975.

MONUMENTS & ACCESSORIES FOUND: Condition and Source

Fnd. 2 1/2" B.C. imbedded in rock river bed stamped as below.  
Fnd. 2 1/2" Iron Pipe W.C. with 2 1/2" B.C. N 79° 31' W  
211.79 feet.

MONUMENT DETAIL



MONUMENT SET (PROCEDURES AND DESCRIPTION)

NEW ACCESSORIES

	From which	
The face of a 7' diameter bridge column	Bears N58° E	33.9 feet
" " " " " " " "	Bears S21° W	92.3 feet
" " " " " " " "	Bears N29° W	133.7 feet.

LOCATION & COMMENTS

At intersection of River Rd. and I 82, corner lies under Northbound Bridge 150' West of River Rd. AND IN RIVER BED

SURVEYOR'S SEAL

COMPASS DEC.  
FIRM EDWARDS SURVEYING  
P.O. BOX 763, HERMISTON,  
OREGON, 97838  
PARTY CHIEF D. EDWARDS  
NOTES  
WITNESS J. COPPOCK

REGISTERED PROFESSIONAL LAND SURVEYOR

*Dennis Edwards*

OREGON  
JULY 16, 1971  
G. DENNIS EDWARDS  
951

RECEIVED BY

Umatilla County Surveyor

Date 1-91

Rec'd By KA

No. 91-01-B