

OREGON CORNER RESTORATION FORM

SECTION 20 TOWNSHIP 5N RANGE 28E N-7

COUNTY: UMATILLA DATE 1/90

CORNER DESIGNATION

N 1/4 Corner

CONDITION REPORT ONLY

- NOT FOUND
- RENEWED
- UNRECORDED
- SURVEYED IN
- REFERENCED OUT

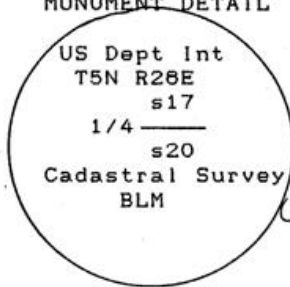
PREVIOUS RENEWALS/SURVEYS, ETC.

Original survey by Davenport in 1861, Contract #101. BLM Dependent Resurvey by Frank A. Tuers completed Sept. 12, 1975.

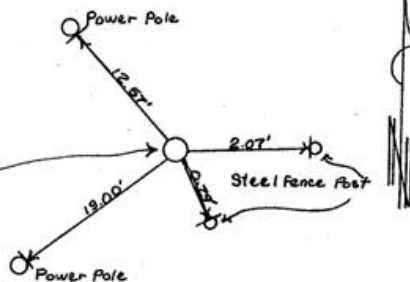
MONUMENTS & ACCESSORIES FOUND: Condition and Source

Found a 3 1/4" BLM Brass Cap on a 2 1/2" OD Galv. Pipe 0.5 ft above surface of ground, stamped as shown below.

MONUMENT DETAIL



SKETCH



MONUMENT SET (PROCEDURES AND DESCRIPTION)

NEW ACCESSORIES

- A steel fence post w/a Bearing Object & Witness sign attached N 87° 06' 50" E 2.07 feet.
- A steel fence post w/ a Bearing Object, Witness sign attached S 26° 27' 50" E 0.79 feet.
- A power pole w/ an Alum. Tag #951 & Bearing Object sign attached. S 42° 22' 30" W 12.57 feet. To Alum. Tag
- A power pole w/ an Alum. Tag #951 & Bearing Object sign attached. S 52° 08' 50" W 19.00 feet. To Alum. Tag

LOCATION & COMMENTS

At the intersection of Power Line Rd. and the West Extension Irrigation Canal, go SE along the N bank of canal approximately 1700 ft. to corner.

SURVEYOR'S SEAL

COMPASS DEC.  
 FIRM EDWARDS SURVEYING  
 P.O. BOX 763, HERMISTON,  
 OREGON, 97838  
PARTY CHIEF D. EDWARDS  
NOTES  
WITNESS J. COPPOCK

REGISTERED  
 PROFESSIONAL  
 LAND SURVEYOR

*G. Dennis Edwards*

OREGON  
 JULY 16, 1871  
 G. DENNIS EDWARDS  
 951

RECEIVED BY

Umatilla County Surveyor

Date 1-91

Rec'd By JA

No. 91-01-B