

OREGON CORNER RESTORATION FORM

SECTION 19 TOWNSHIP 5 NORTH RANGE 28 EAST

N-5

COUNTY : UMATILLA DATE 6/04

CORNER DESIGNATION

SECTION 19

CONDITION REPORT ONLY

NOT FOUND

RENEWED

UNCOVERED

SURVEYED IN

REFERENCED

PREVIOUS RENEWALS / SURVEYS, ETC.

ORIGINAL GLO SURVEY BY DAVENPORT UNDER CONTRACT #101 IN 1861. SET POST WITH MOUND AND CHARRED STAKE.

CORPS OF ENGINEERS RETRACEMENT IN 1959. SET 6" X 6" CONC. POST.

TUERS DEPENDENT RESURVEY IN 1975. SET IRON POST 28" LONG 2 1/2" DIAM. WITH BRASS CAP.

EDWARDS REFERENCED THE MONUMENT IN 1991 SURVEY # 91-01-B.

WELLS RECOVERED THE MONUMENT AND REFERENCED SAME IN 1998 SURVEY # 98-101-C.

MONUMENTS AND ACCESSORIES FOUND: CONDITION AND SOURCE

A 3 1/4" BRASS CAP (SEE MONUMENT DETAIL)

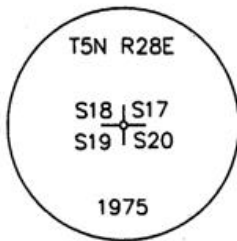
AN ALUMINUM TAG "#951" ON A POWER POLE LIES N 46°07'20" E, 44.97 FEET.

AN ALUMINUM TAG "#951" ON A POWER POLE LIES N 85°34'10" E, 29.77 FEET.

AN ALUMINUM TAG "#951" ON A POWER POLE LIES S 36°50'40" W, 45.20 FEET.

THE CENTER OF A WATER MANHOLE WITH AN "X" IN THE CENTER LIES N 41°00'00" W, 54.22 FEET

MONUMENT DETAIL

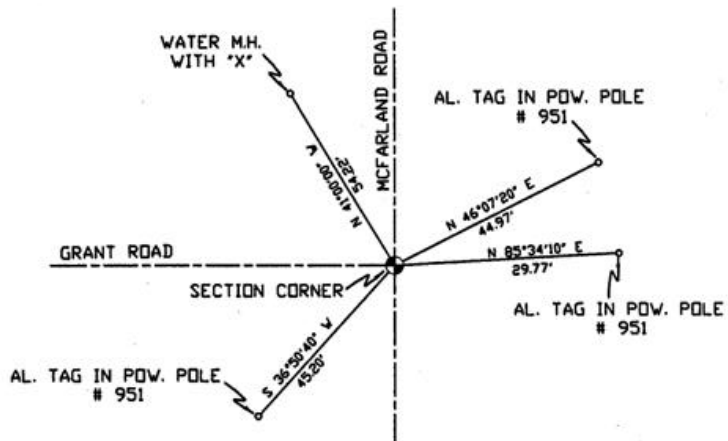


NAD 83/91
OREGON STATE PLANE
INTERNATIONAL FEET

819262.93
8495084.67



SKETCH



MONUMENT SET (PROCEDURES AND DESCRIPTION)

NEW ACCESSORIES FROM WHICH

LOCATION AND COMMENTS

AT THE INTERSECTION OF
MCFARLAND ROAD WITH GRANT ROAD.

COMPASS DEC.

FIRM/AGENCY
PRIMM LAND SURVEYING LLC
P.O. BOX 1322
HERMISTON, OREGON 97838

PARTY CHIEF
KEITH P. PRIMM

NOTES

WITNESS
BRIT L. PRIMM

SURVEYOR'S SEAL

REGISTERED
PROFESSIONAL
LAND SURVEYOR

Brit L. Primm

OREGON
JULY 13, 1999
BRIT L. PRIMM
48509

EXPIRATION DATE: 12/31/04

Aug/18/04

04-155-B