

OREGON CORNER RESTORATION FORM

SECTION 19 TOWNSHIP 5N RANGE 28E N-3

COUNTY: UMATILLA DATE 1/90

CORNER DESIGNATION

N 1/4 Corner

- CONDITION REPORT ONLY
- NOT FOUND
- RENEWED
- UNRECORDED
- SURVEYED IN
- REFERENCED OUT

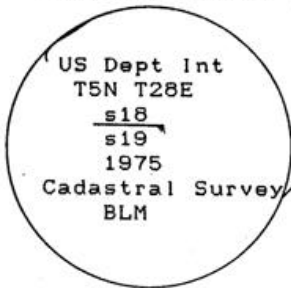
PREVIOUS RENEWALS/SURVEYS, ETC.

Original survey by Davenport in 1861 under Contract #101. BLM Dependent Resurvey by Frank A. Tuers completed Sept. 12, 1975

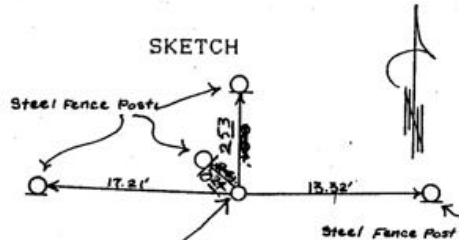
MONUMENTS & ACCESSORIES FOUND: Condition and Source

Found a 3 1/4" U.S. Dept. of Interior Brass Cap, stamped as shown below, 0.3 ft. above surface of ground on a 2 1/2" OD Galv. steel pipe.

MONUMENT DETAIL



SKETCH



MONUMENT SET (PROCEDURES AND DESCRIPTION)

NEW ACCESSORIES

NEW ACCESSORIES	From which	
Steel fence post w/	Bearing Object	sign N 50° W. 0.24 feet.
" " " w/	" "	sign N 00° 05' 30" W
2.53 feet.		
Steel fence post w/	" "	sign N 88° 08' 30" E
13.32 feet.		
Steel fence post w/	" "	sign N 88° 27' 10" W
17.21 feet.		

LOCATION & COMMENTS

From the NW corner of the new Umatilla City Cemetery, go West along a dirt track approx. 1170 feet to corner.

COMPASS DEC.
 FIRM EDWARDS SURVEYING
 P.O. BOX 763, HERMISTON,
 OREGON, 97838
 PARTY CHIEF D. EDWARDS
NOTES
 WITNESS J. COPPOCK

SURVEYOR'S SEAL

REGISTERED
 PROFESSIONAL
 LAND SURVEYOR

Dennis Edwards

OREGON
 JULY 18, 1971
 G. DENNIS EDWARDS
 951

RECEIVED BY

Umatilla County Surveyor

Date 1-91

Rec'd by KA

No. 91-01-B