

OREGON CORNER RESTORATION FORM

SECTION 16 TOWNSHIP 5N RANGE 28E J-9

COUNTY: UMATILLA DATE 1/90

CORNER DESIGNATION

NW Corner

CONDITION REPORT ONLY
 NOT FOUND
 RENEWED
 UNRECORDED
 SURVEYED IN
 REFERENCED OUT

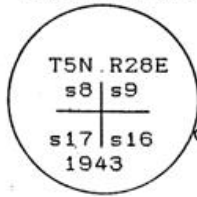
PREVIOUS RENEWALS/SURVEYS, ETC.

Original survey by Davenport in 1861 under Contract #101.
 Dependent Resurvey by Price, BLM, completed April 11, 1943.

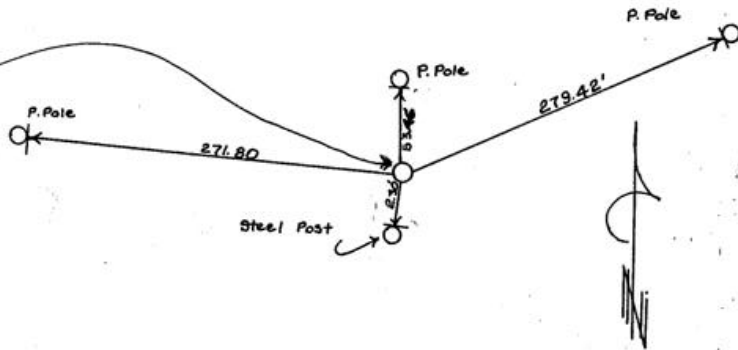
MONUMENTS & ACCESSORIES FOUND: Condition and Source

As found & described by Price 1943. Iron post 3 ft. long 2 in. diameter 30" in the ground with Brass Cap marked as shown below. (B. Cap 2 1/2" Dia.)

MONUMENT DETAIL



SKETCH



MONUMENT SET (PROCEDURES AND DESCRIPTION)

No new monuments set.

NEW ACCESSORIES

From which

- A power pole N 86° 24' W 271.80 ft. w/Alum. Tag #951 attached
 - A " " N 02° 21' 40" W 53.46' w/ " " " "
 - A " " N 64° 23' 00" E 279.42' " " " "
 - A steel post S 05° W 2.30 ft. w/Witness Corner sign attached
- Bearing Object signs attached to all accessories.
 Distances To Alum. Tags in power poles

LOCATION & COMMENTS

From the intersection of 3rd Ave & I-82 ^{OVER PASS} go Westerly along 3rd Ave. ~~to the corner of 3rd Ave & I-82~~ approx. 1000 ft. to the corner ~~of 3rd Ave & I-82~~ abt. 7 ft. South of St.

COMPASS DEC.
 FIRM EDWARDS SURVEYING
 P.O. BOX 763, HERMISTON,
 OREGON, 97838
 PARTY CHIEF D. EDWARDS
 NOTES
 WITNESS J. COPPOCK

SURVEYOR'S SEAL

REGISTERED PROFESSIONAL LAND SURVEYOR

Dennis Edwards

OREGON
 JULY 16, 1871
 G. DENNIS EDWARDS
 951

RECEIVED BY

Umatilla County Surveyor
 Date 1-91
 Rec'd by KA
 No. 91-01-B