

OREGON CORNER RESTORATION FORM

SECTION 27 TOWNSHIP 5 NORTH RANGE 27 EAST

V-17

COUNTY : UMATILLA DATE 5/06

CORNER DESIGNATION

SE CORNER SECTION 27

CONDITION REPORT ONLY

NOT FOUND

RENEWED

UNCOVERED

SURVEYED IN

REFERENCED

PREVIOUS RENEWALS / SURVEYS, ETC.

ORIGINAL GLO SURVEY BY DAVENPORT UNDER CONTRACT #101 IN 1861. SET POST WITH MOUND AND CHARRED STAKE.

KRUMBEIN FOR BAKER-ROGERS 1973 SURVEY NO. 1-16-C

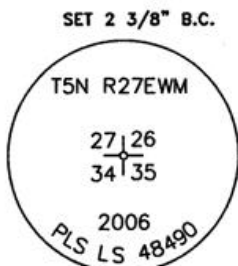
MONUMENTS AND ACCESSORIES FOUND: CONDITION AND SOURCE

2 1/2" B.C. WITNESS CORNER STAMPED RLS 933 LIES N 5' W, 25.70 FEET

2 1/2" B.C. WITNESS CORNER STAMPED RLS 933 LIES S 5' E, 15.11 FEET

SKETCH

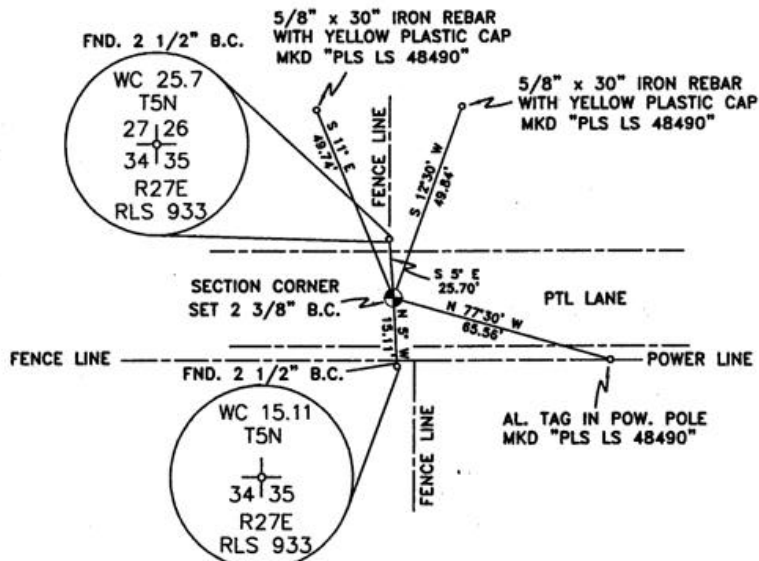
MONUMENT DETAIL



NAD 83/91
OREGON STATE PLANE
INTERNATIONAL FEET

N 808548.1286
E 8479350.2192

N.T.S



MONUMENT SET (PROCEDURES AND DESCRIPTION)

2 3/8" B.C. SECTION CORNER STAMPED AS ABOVE, RESET ON LINE AND AT RECORDS DISTANCES BETWEEN FOUND NORTH AND SOUTH WITNESS CORNERS.

NEW ACCESSORIES FROM WHICH

AN ALUMINUM TAG "PLS LS 48490" ON A POWER POLE LIES S 77°30' E, 65.56 FEET.

A 5/8" x 30" IRON REBAR WITH A YELLOW PLASTIC CAP MKD "PLS LS 48490" LIES N 12°30' E, 49.84 FEET.

A 5/8" x 30" IRON REBAR WITH A YELLOW PLASTIC CAP MKD "PLS LS 48490" LIES N 11' W, 49.74 FEET.

LOCATION AND COMMENTS

FROM THE INTERSECTION OF HWY. 730 AND PLEASANT VIEW ROAD GO SOUTH ON PLEASANT VIEW ROAD +/-2000' ACROSS CANAL, CONTINUE SOUTH TO WHERE POWER LINE RUNS IN A E-W DIRECTION AND N. DIRECTION THEN GO EAST 1 MILE ON PTL LANE. CORNER FALLS IN CENTER OF PTL LANE.

COMPASS DEC.

17.5 DEG EAST

FIRM/AGENCY

PRIMM LAND SURVEYING LLC
1340 N.E. 4TH P.O. BOX 1322
HERMISTON, OREGON 97838

PARTY CHIEF

BRIT L. PRIMM

NOTES

WITNESS

KEITH P. PRIMM
JOE L. PRIMM

SURVEYOR'S SEAL

REGISTERED
PROFESSIONAL
LAND SURVEYOR

Keith P. Primm

OREGON
JULY 12, 2005
KEITH P. PRIMM
48490

EXPIRATION DATE: 12/31/06

06-461-B