

OREGON CORNER RESTORATION FORM

SECTION 28 TOWNSHIP 5 NORTH RANGE 27 EAST

T-13

COUNTY : UMATILLA DATE 5/06

CORNER DESIGNATION

E 1/4 CORNER SECTION 28

CONDITION REPORT ONLY
 NOT FOUND
 RENEWED
 UNCOVERED
 SURVEYED IN
 REFERENCED

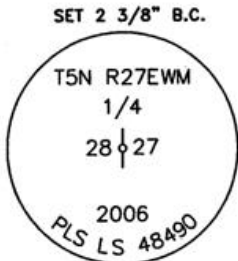
PREVIOUS RENEWALS / SURVEYS, ETC.

ORIGINAL GLO SURVEY BY DAVENPORT UNDER CONTRACT #101 IN 1861. SET POST WITH MOUND AND CHARRED STAKE.

MONUMENTS AND ACCESSORIES FOUND: CONDITION AND SOURCE

NONE

MONUMENT DETAIL



NAD 83/91
 OREGON STATE PLANE
 INTERNATIONAL FEET

N 811130.1288
 E 8474024.7884

MONUMENT SET (PROCEDURES AND DESCRIPTION)

2 3/8" B.C. 1/4 CORNER STAMPED AS ABOVE, RESET AT SINGLE PROPORTIONATE MEASUREMENTS BETWEEN FOUND NORTH AND FOUND SOUTH SECTION CORNERS.

NEW ACCESSORIES FROM WHICH

- A 5/8" x 30" IRON REBAR WITH A YELLOW PLASTIC CAP MKD "PLS LS 48490" LIES N 44° E, 20.76' FEET.
- A 5/8" x 30" IRON REBAR WITH A YELLOW PLASTIC CAP MKD "PLS LS 48490" LIES S 42° E, 18.46' FEET.
- AN ALUMINUM TAG "PLS LS 48490" ON A POWER POLE LIES S 4° W, 215.90 FEET.
- AN ALUMINUM TAG "PLS LS 48490" ON A POWER POLE LIES N 10° W, 135.82' FEET.

LOCATION AND COMMENTS

FROM THE INTERSECTION OF HWY. 730 AND PLEASANT VIEW ROAD, GO SOUTH ON PLEASANT VIEW ROAD +/- 2000' ACROSS CANAL, CONTINUE SOUTH TO WHERE A POWER LINE RUNS IN AN E-W AND A NORTH DIRECTION, CONTINUE SOUTH GRADUALLY GOING UP A SLOPE TO CORNER. CORNER FALLS EAST +/- 30' OF FENCE LINE AND POWER LINE.

COMPASS DEC.

17.5 DEG EAST

FIRM/AGENCY

PRIMM LAND SURVEYING LLC
 1340 N.E. 4TH P.O. BOX 1322
 HERMISTON, OREGON 97838

PARTY CHIEF

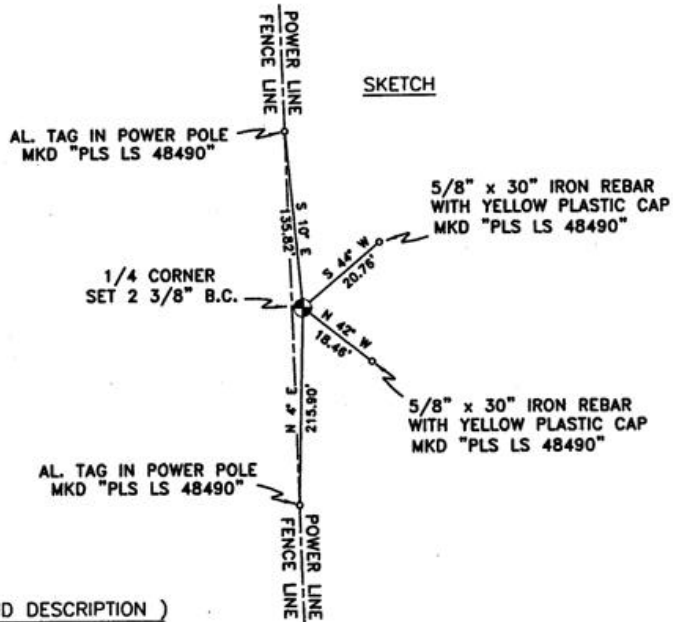
BRIT L. PRIMM

NOTES

WITNESS

KEITH P. PRIMM
 JOE L. PRIMM

SKETCH



SURVEYOR'S SEAL

REGISTERED
 PROFESSIONAL
 LAND SURVEYOR

Keith P. Primm

OREGON
 JULY 12, 2005
 KEITH P. PRIMM
 48490

EXPIRATION DATE: 12/31/06

06-461-B