

OREGON CORNER RESTORATION FORM

SECTION 24 TOWNSHIP 5 NORTH RANGE 27 EAST
 COUNTY : UMATILLA DATE 5/06

R-23

CORNER DESIGNATION

S 1/4 CORNER SECTION 24

- CONDITION REPORT ONLY
- NOT FOUND
- RENEWED
- UNCOVERED
- SURVEYED IN
- REFERENCED

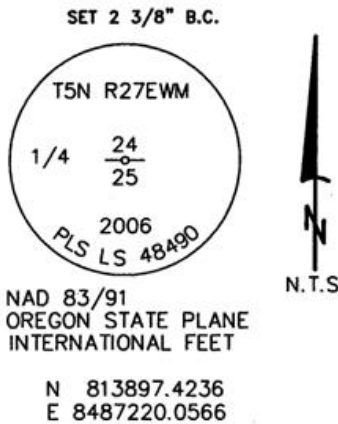
PREVIOUS RENEWALS / SURVEYS, ETC.

ORIGINAL GLO SURVEY BY DAVENPORT UNDER CONTRACT #101 IN 1861. SET POST WITH MOUND AND CHARRED STAKE.

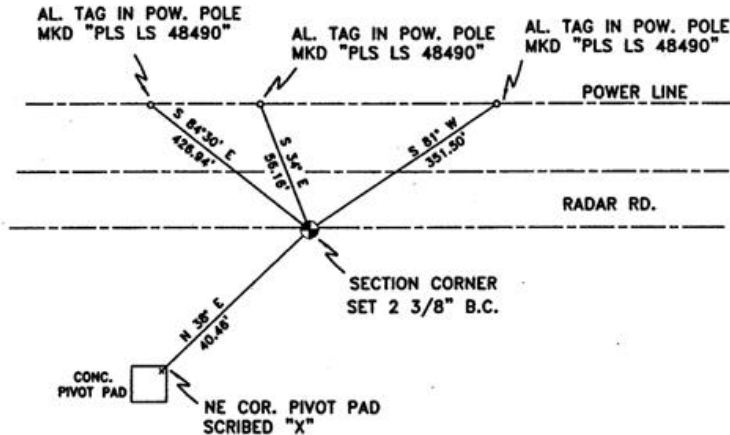
MONUMENTS AND ACCESSORIES FOUND: CONDITION AND SOURCE

NONE

MONUMENT DETAIL



SKETCH



MONUMENT SET (PROCEDURES AND DESCRIPTION)

2 3/8" B.C. 1/4 CORNER STAMPED AS ABOVE, RESET AT SINGLE PROPORTIONATE MEASUREMENTS BETWEEN FOUND EAST AND FOUND WEST SECTION CORNERS.

NEW ACCESSORIES FROM WHICH

- AN ALUMINUM TAG "PLS LS 48490" ON A POWER POLE LIES N 81° E, 351.50' FEET.
- AN ALUMINUM TAG "PLS LS 48490" ON A POWER POLE LIES N 34° W, 56.16 FEET.
- AN ALUMINUM TAG "PLS LS 48490" ON A POWER POLE LIES N 84°30' W, 426.94' FEET.
- A SCRIBED "X" AT THE N.E. COR. OF CONC. PIVOT PAD LIES S 38° W, 40.46 FEET.

LOCATION AND COMMENTS

FROM THE INTERSECTION OF POWER LINE ROAD AND RADAR ROAD, GO WEST 1.7 MILES TO CORNER. CORNER FALLS NEAR CENTER OF PIVOT CIRCLE ON SOUTH SIDE OF RADAR ROAD.

COMPASS DEC.

17.5 DEG EAST

FIRM/AGENCY

PRIMM LAND SURVEYING LLC
 1340 N.E. 4TH P.O. BOX 1322
 HERMISTON, OREGON 97838

PARTY CHIEF

BRIT L. PRIMM

NOTES

WITNESS

KEITH P. PRIMM
 JOE L. PRIMM

SURVEYOR'S SEAL

REGISTERED
 PROFESSIONAL
 LAND SURVEYOR

Keith P. Primm

OREGON
 JULY 12, 2005
 KEITH P. PRIMM
 48490

EXPIRATION DATE: 12/31/06

06-461-B