

OREGON CORNER RESTORATION FORM

SECTION 14 TOWNSHIP 5 NORTH RANGE 27 EAST

N-21

COUNTY : UMATILLA DATE 5/06

CORNER DESIGNATION

SE CORNER SECTION 14

CONDITION REPORT ONLY

NOT FOUND

RENEWED

UNCOVERED

SURVEYED IN

REFERENCED

PREVIOUS RENEWALS / SURVEYS, ETC.

ORIGINAL GLO SURVEY BY DAVENPORT UNDER CONTRACT #101 IN 1861. SET POST WITH MOUND AND CHARRED STAKE.

EDWARDS FOR FLETCHER 1977 SURVEY NO. N-87-A

EDWARDS FOR UNIVERSAL REALTY 1976 SURVEY NO. K-92-A

EDWARDS FOR UMATILLA COUNTY 1990 SURVEY NO. 91-01-B

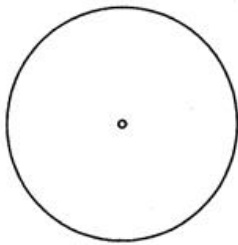
KRUMBEIN FOR BAKER-ROGERS 1973 SURVEY NO. I-16-C

MONUMENTS AND ACCESSORIES FOUND: CONDITION AND SOURCE

CONC. MONUMENT WITH BRASS PLUG SECTION CORNER

MONUMENT DETAIL

FND. CONC. MON. W/BRASS PLUG

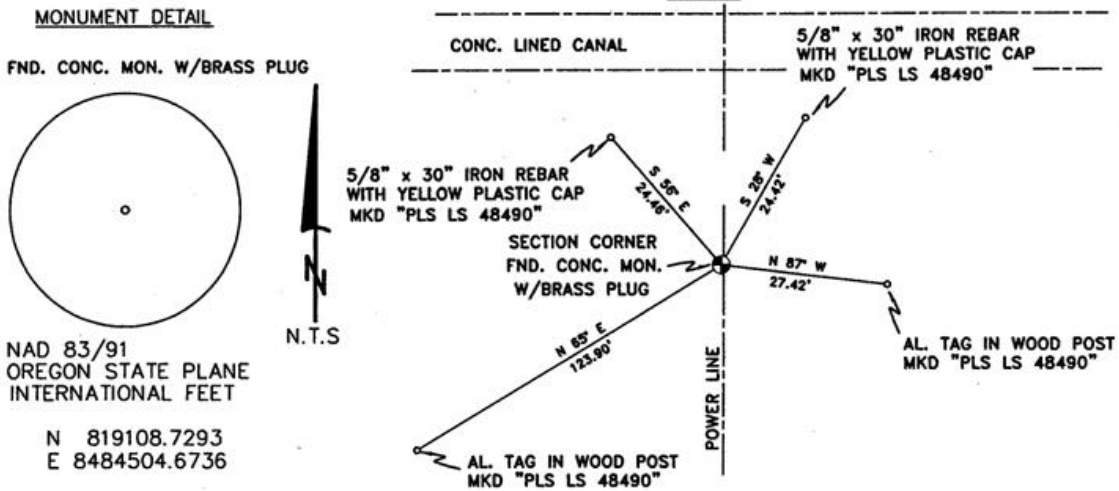


NAD 83/91
OREGON STATE PLANE
INTERNATIONAL FEET

N 819108.7293
E 8484504.6736

N.T.S.

SKETCH



MONUMENT SET (PROCEDURES AND DESCRIPTION)

NEW ACCESSORIES FROM WHICH

AN ALUMINUM TAG "PLS LS 48490" ON A WOOD POST LIES S 65° W, 123.90' FEET.

AN ALUMINUM TAG "PLS LS 48490" ON A WOOD POST LIES S 87° E, 27.42 FEET.

A 5/8" x 30" IRON REBAR WITH A YELLOW PLASTIC CAP MKD "PLS LS 48490" LIES N 28° E, 24.42 FEET.

A 5/8" x 30" IRON REBAR WITH A YELLOW PLASTIC CAP MKD "PLS LS 48490" LIES N 56° W, 24.46 FEET.

LOCATION AND COMMENTS

FROM THE INTERSECTION OF HWY. 730 AND KURZ LANE, GO SOUTH +/- 1200' ON KURZ LANE ACROSS CANAL THEN GO SW'LY UP SLOPE +/- 280'. CORNER FALLS NORTH OF SLOPE +/- 130' ON SOUTH SIDE OF CANAL +/- 60'.

COMPASS DEC.

17.5 DEG EAST

FIRM/AGENCY

PRIMM LAND SURVEYING LLC
1340 N.E. 4TH P.O. BOX 1322
HERMISTON, OREGON 97838

PARTY CHIEF

BRIT L. PRIMM

NOTES

WITNESS

KEITH P. PRIMM
JOE L. PRIMM

SURVEYOR'S SEAL

REGISTERED
PROFESSIONAL
LAND SURVEYOR

Keith P. Primm

OREGON
JULY 12, 2005
KEITH P. PRIMM
48490

EXPIRATION DATE: 12/31/06

06-461-B