

OREGON CORNER RESTORATION FORM

SECTION 14 TOWNSHIP 5 NORTH RANGE 27 EAST

N-19

COUNTY : UMATILLA DATE 5/06

CORNER DESIGNATION

S 1/4 CORNER SECTION 14

CONDITION REPORT ONLY

NOT FOUND

RENEWED

UNCOVERED

SURVEYED IN

REFERENCED

PREVIOUS RENEWALS / SURVEYS, ETC.

ORIGINAL GLO SURVEY BY DAVENPORT UNDER CONTRACT #101 IN 1861. SET POST WITH MOUND AND CHARRED STAKE.

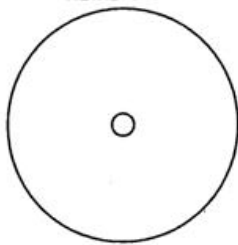
EDWARDS FOR FLETCHER 1977 SURVEY NO. N-87-A

MONUMENTS AND ACCESSORIES FOUND: CONDITION AND SOURCE

5/8" IRON ROD IN METAL CASING 1/4 CORNER

MONUMENT DETAIL

FND. 5/8 I.R. IN METAL CASING



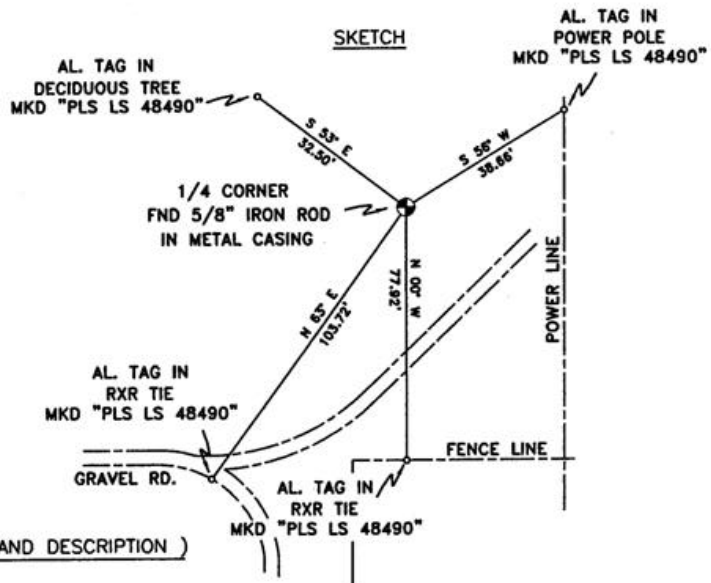
NAD 83/91
OREGON STATE PLANE
INTERNATIONAL FEET

N 819080.5810
E 8481858.0494



MONUMENT SET (PROCEDURES AND DESCRIPTION)

SKETCH



NEW ACCESSORIES FROM WHICH

AN ALUMINUM TAG "PLS LS 48490" ON A DECIDUOUS TREE LIES N 53° W, 32.50 FEET.

AN ALUMINUM TAG "PLS LS 48490" ON A POWER POLE LIES N 56° E, 38.66 FEET.

AN ALUMINUM TAG "PLS LS 48490" ON A RXR TIE LIES S 00° E, 77.92 FEET.

AN ALUMINUM TAG "PLS LS 48490" ON A RXR TIE LIES S 63° W, 103.72 FEET.

LOCATION AND COMMENTS

FROM THE INTERSECTION OF HWY. 730 AND FOX LANE GO SOUTH +/-500' THEN EAST ON CHUKAR LANE +/-1000' TO CORNER. CORNER FALLS ON NORTH SIDE OF CHUKAR LANE +/- 40'.

COMPASS DEC.

17.5 DEG EAST

FIRM/AGENCY

PRIMM LAND SURVEYING LLC
1340 N.E. 4TH P.O. BOX 1322
HERMISTON, OREGON 97838

PARTY CHIEF

BRIT L. PRIMM

NOTES

WITNESS

KEITH P. PRIMM
JOE L. PRIMM

SURVEYOR'S SEAL

REGISTERED
PROFESSIONAL
LAND SURVEYOR

OREGON
JULY 12, 2005
KEITH P. PRIMM
48490

EXPIRATION DATE: 12/31/06

06-466-B