

USDA-FOREST SERVICE

Index  
File No. E-13

CORNER RECORD (SEARCH)

(Ref. FSM 7151.4)

Tract or  
Survey No. \_\_\_\_\_  
Cor. No. E-13

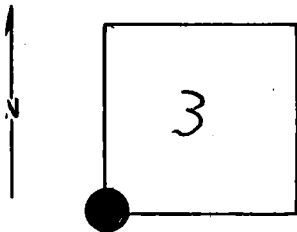
T 45 R. 33 E

R.D. UKiah County Umatilla

Merid. Will.

N.F. Umatilla State Oregon

CORNER DIAGRAM



DESCRIBE CORNER MONUMENT FOUND SET

Brass Cap: 1977

DESCRIBE BEARING TREES OR OTHER OFFICIAL ACCESSORIES FOUND

Notes on file; See Monumentation File

PHOTO IDENTIFICATION DATA

Photo No. \_\_\_\_\_  
Filed At. \_\_\_\_\_  
Object Ident. \_\_\_\_\_  
Ident. By \_\_\_\_\_  
*Signature*

DESCRIBE CORNER LOCATION RELATIVE TO NEAR-BY FEATURES, ALSO HOW TO REACH CORNER

PLANE COORDINATE POSITION DATA

State \_\_\_\_\_ Zone \_\_\_\_\_  
X \_\_\_\_\_  
Y \_\_\_\_\_  
Estab. By \_\_\_\_\_  
*Agency*

Signature

Title

Division

Headquarters

Date

7100-52-(3/68)

**CORNER RECORD ( PERPETUATION )**

**MONUMENT : DESCRIBE NEW MONUMENT SET, OR WORK DONE TO PRESERVE EXISTING MONUMENT**

9

**ACCESSORIES : DESCRIBE NEW BT'S WITNESS OBJECTS ETC. ESTABLISHED, OR WORK DONE TO PRESERVE EXISTING EVIDENCE**

10

Work Done By \_\_\_\_\_ Title \_\_\_\_\_ Date \_\_\_\_\_ State Registration No. or Agency \_\_\_\_\_

Certified Cor. Record Prepared? Yes No . Filed At: \_\_\_\_\_ Date \_\_\_\_\_

11

**REMARKS**

12

Index File No. T. R. M. Tract or Surv. No. Cor. \_\_\_\_\_

13