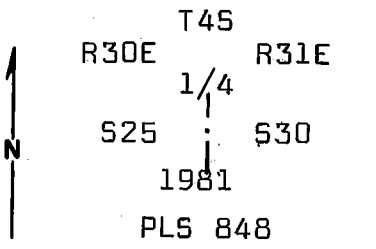


Index  
 File No. T-25  
 T 45 R. 30&31E  
 Merid. Willamette

**CORNER RECORD (SEARCH)**  
 (Ref. FSM 7151.4)

Tract or Survey No. \_\_\_\_\_ Cor. No. \_\_\_\_\_  
 R.D. Ukiah County Umatilla  
 N.F. Umatilla State Oregon

**CORNER DIAGRAM**



**DESCRIBE CORNER MONUMENT FOUND**  
 Corner has been destroyed by fence construction.

**DESCRIBE BEARING TREES OR OTHER OFFICIAL ACCESSORIES FOUND**  
 No bearing trees previously established. Positioned corner by proportion from found corners 1/2 mile North and 1/2 mile South.

**PHOTO IDENTIFICATION DATA**

Photo No. \_\_\_\_\_  
 Filed At. \_\_\_\_\_  
 Object Ident. \_\_\_\_\_  
 Ident. By \_\_\_\_\_  
 Signature \_\_\_\_\_

**DESCRIBE CORNER LOCATION RELATIVE TO NEAR-BY FEATURES, ALSO HOW TO REACH CORNER**

Corner is on NE side of gentle open SE draw, approx. 250 ft. from draw bottom Ridge road approx. 250 ft. North from corner. Corner is visible from road.

**PLANE COORDINATE POSITION DATA**

State \_\_\_\_\_ Zone \_\_\_\_\_  
 X \_\_\_\_\_  
 Y \_\_\_\_\_  
 Estab. By \_\_\_\_\_  
 Agency \_\_\_\_\_

Signature Douglas M. Ferguson

Title PLS 848 Division \_\_\_\_\_ Headquarters Mt. Vernon, OR Date 7/29/81  
 7100-52-(3,68)

CORNER RECORD (PERPETUATION)

MONUMENT: DESCRIBE NEW MONUMENT SET, OR WORK DONE TO PRESERVE EXISTING MONUMENT

Set 3"x30" galv. iron pipe with 3" brass cap stamped as shown on the diagram; set 10 inches in the ground and raised a mound of stone around the pipe.

ACCESSORIES : DESCRIBE NEW BT's WITNESS OBJECTS ETC. ESTABLISHED, OR WORK DONE TO PRESERVE EXISTING EVIDENCE

No bearing trees available.  
Set steel posts with warning and boundary signs 7.0 ft. North and 6.2 ft. West from corner.

Work Done By D.M. Ferguson Title Surveyor Date 7/29/81 State Registration No. OR PLS 848  
or Agency

Certified  REGISTERED Deposed? Yes  No  Filed At: Umatilla Co. Surveyor Off. Date

PROFESSIONAL  
LAND SURVEYOR

REMARKS

Witnesses to above corner:

D. Mitchell Ferguson  
Mike Woodward

OREGON  
JULY 12, 1968  
DOUGLAS M. FERGUSON  
848

Index

File No. T-25

## CORNER RECORD (SEARCH)

(Ref. FSM 7151.4)

Tract or  
Survey No. \_\_\_\_\_Cor.  
No. \_\_\_\_\_

4-113

T 4 S. R. 30 E.

R.D.

Ukiah

County

UmatillaMerid. Willamette

N.F.

Umatilla

State

Oregon

## CORNER DIAGRAM



## DESCRIBE CORNER MONUMENT FOUND

Stone mound.

No marking visible. Mound sets 2 ft. east of fence corner.

## DESCRIBE BEARING TREES OR OTHER OFFICIAL ACCESSORIES FOUND

Fence runs south and west from stone mound. Very large rock jack at corner.  $\frac{1}{4}$  stone may be among these.

Very old location poster on nearby fence post, also a newer Oregon State Board of Forestry location poster.

No B.T.'s were set. Location is in open area.

## DESCRIBE CORNER LOCATION RELATIVE TO NEAR-BY FEATURES, ALSO HOW TO REACH CORNER

Location is approx. 200 ft. south of road between Highway 395 and Log Spring - about 3.7 miles west of highway.

## PHOTO IDENTIFICATION DATA

Photo No. \_\_\_\_\_

Filed At. \_\_\_\_\_

Object Ident. \_\_\_\_\_

Ident. By \_\_\_\_\_

*Signature*

## PLANE COORDINATE POSITION DATA

State \_\_\_\_\_ Zone \_\_\_\_\_

X \_\_\_\_\_

Y \_\_\_\_\_

Estab. By \_\_\_\_\_

*Agency*

Signature

T, Hollamon

Title

Eng, Tech,

Division

Headquarters

S, O,

Date

5/10/74

7100-52-(3/68)

5

**CORNER RECORD (PERPETUATION)**

**MONUMENT : DESCRIBE NEW MONUMENT SET, OR WORK DONE TO PRESERVE EXISTING MONUMENT**

**ACCESSORIES : DESCRIBE NEW BT's WITNESS OBJECTS ETC. ESTABLISHED, OR WORK DONE TO PRESERVE EXISTING EVIDENCE**

**Work Done By.** \_\_\_\_\_ **Title** \_\_\_\_\_ **Date** \_\_\_\_\_ **State Registration No.** \_\_\_\_\_  
**or Agency** \_\_\_\_\_

**Certified Cor. Record Prepared ?** Yes No **Filed At:** \_\_\_\_\_ **Date** \_\_\_\_\_

**REMARKS**

**Index File No.** T. R. M. **Tract or Surv. No.** **Cor.**