

**OREGON CORNER RESTORATION FORM**

Section 21 Township 4S Range 31E  
 County Umatilla Date: August 11, 2009

Corner Designation: 4S31R13

Corner common to sections 21, 22, 27, and 28, T4S, R31E, W.M., Umatilla County, Oregon.

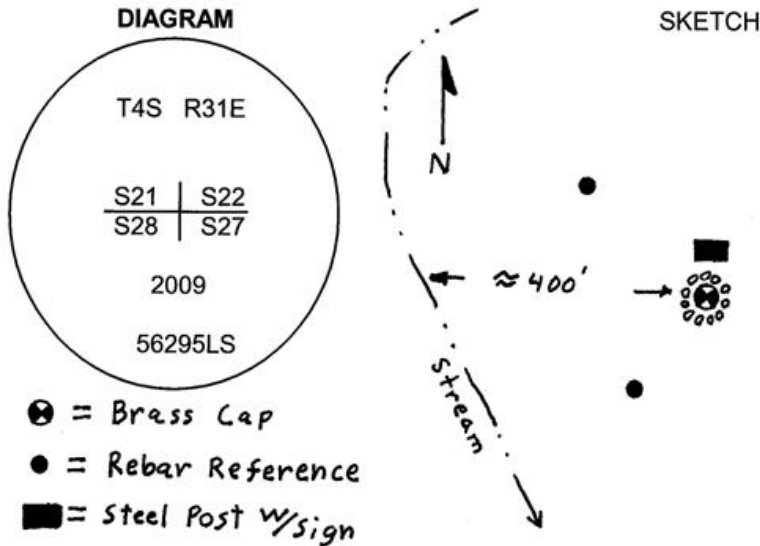
Condition Report Only  
 Not found  
 Remonumented  
 Unrecorded  
 Surveyed in  
 Referenced out

Previous Renewals / Surveys, etc.

Corner originally set by George S. Pershin under contract No. 373 dated September 17, 1880. His record reads: Set basalt stone 18 x 12 x 10 in mound of stone on S.W. slope for cor. to Secs. 21, 22, 27 and 28. A pine 10 ins. diam. brs. S. 64° W. 244 lks. dist. No other trees.

Monument and Accessories found: ( condition and source )

The original stone, firmly set in a small mound of stone, with 3 notches on the north and south edges. The remains of the bearing tree stump were badly decayed.



**MONUMENT (S) AND ACCESSORIES SET (Procedures and Description)**

At the corner point I set a 2 3/8" brass cap on a 1 1/2" x 30" galvanized iron pipe 26" in the ground to bedrock. I buried the original stone along the west side of the cap and made a small collar of stone to the top of the cap.

For references, I set four, 5/8" by 24" rebars with 1 1/8" orange plastic caps attached, stamped WTS and 56295LS as described below:

- an iron rebar bears N47°21'23"W, 54.84 feet ;
- an iron rebar bears N87°14'32"E, 54.26 feet;
- an iron rebar bears S0°43'56"W, 40.80 feet;
- an iron rebar bears S64°07'40"W, 23.54 feet;

The monument and references were tied using a Trimble R7/R8 RTK GPS.

**Location and comments**

Witnessed By:  
 Jacob Fitzgerald

RECEIVED BY:  
 Umatilla County Surveyor

Date: 9-09  
 Rec'd By: KK  
 No. 09-123B

**Compass Declination**

Firm / Agency  
 Witness Tree Surveying  
 Address  
 P.O. Box G  
 Pilot Rock, Or. 97868  
 Party Chief  
 Stephen K, Haddock

**Surveyors Seal**

REGISTERED  
 PROFESSIONAL  
 LAND SURVEYOR

*Stephen K. Haddock*

OREGON  
 JULY 9, 2001  
 STEPHEN K. HADDOCK  
 56295LS

RENEWAL DATE 6-30-11