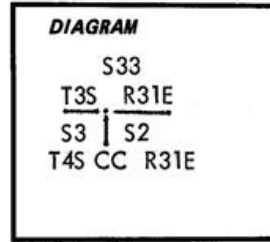


CERTIFIED RECORD OF LAND CORNER MONUMENTATION

A-17

History of original corner establishment: Corner originally established by George S. Pershin, U.S. Deputy Surveyor, under Contract No. 373, dated September 17, 1880. The original notes state that at the corner a 16" x 10" x 8" basalt stone was set on steep South slope for corner from which:



- A 18" dia Pine bears S78°E 142 lk dist.
- A 24" dia Pine bears S42°W 86 lk dist.

No record of remonumentation was found.

Description of corner evidence found:

A 34" dia Ponderosa Pine bears S78°E 93.72 ft dist - (old BT, opened healed blaze to reveal visible scribing).

Note: due to local attraction of fences in the area record bearing was measured from original BT to corner position.

Description of monument and accessories I established to perpetuate the original location of this corner:

Using record bearing and distance from the original BT I set:

A 2 1/2" brass cap on 2 1/2" x 30" l. pipe 18" in ground with mound of stone from which:

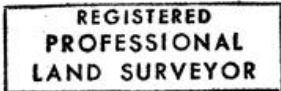
- A 12" dia Ponderosa Pine bears S54°W 29.7 ft dist marked: T4S R31E S3 BT.
- A 12" dia Ponderosa Pine bears S5°E 29.2 ft dist marked: T4S R31E S2 BT.

Blaze faces and 6" band around bearing trees are painted red. Trees tagged with 54-3 & 4 signs. New BTs have a lower blaze, scribed BT, with a brass washer stamped PLS 1106 nailed flush. Set steel fence post with 54-4 sign attached, West of corner. Used steel tape and magnetic compass 19 3/4° East declination. Measured to center of BTs.

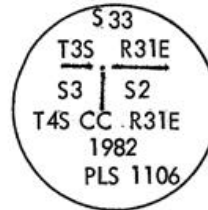
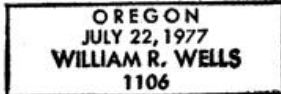
Corner monumented on October 21, 1982.

Cap marked:

Witnessed by: Leslie E. Wilson



William R. Wells



Office of.....County Surveyor..... County of..... Umatilla
 State of..... Oregon....., I hereby certify that the within instrument was filed in this office
 for record on the... 15th day of... December... 1982
 Daniel H. P. ... by Betty J. Shatto
 (COUNTY OFFICIAL) (DEPUTY)

A-17

RECEIVED BY
 Umatilla County Surveyor
 Date _____
 Rec'd by _____
 No. 82-138-B