

Index N-21

File No. \_\_\_\_\_

**CORNER RECORD (SEARCH)**

(Ref. FSM 7151.4)

Tract or Survey No. \_\_\_\_\_ Cor. No. \_\_\_\_\_

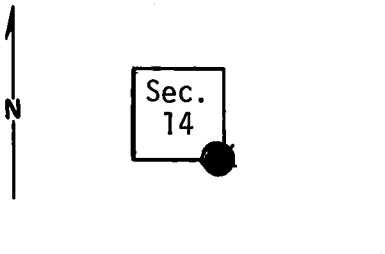
T 4 S. R. 30 E.

R.D. Ukiah County Umatilla

Merid. Willamette

N.F. Umatilla State Oregon

**CORNER DIAGRAM**



**DESCRIBE CORNER MONUMENT FOUND**

Basalt stone, 15"x10"x5", 10" above ground, good condition. 3 notches on S edge, 1 notch on E edge. Sets on end in circle of smaller stones.

*Monumented by BLM, 1978*

2

**DESCRIBE BEARING TREES OR OTHER OFFICIAL ACCESSORIES FOUND**

A 16" p. pine bears N. 20°E., approx. 8 ft. Scribed T4S, R30E, S13, B.T.

An 18" p.pine, down and rotting, bears S.85°E., approx. 67ft. Scribed T4S, R30E, S24, B.T.

A 15" p. pine bears S. 68°W, approx. 5 ft. (GLO notes say S58°W, 8 links). Scribed T4S, R30E, S23, B.T. (cont. in block 12)

3

**PHOTO IDENTIFICATION DATA**

Photo No. \_\_\_\_\_

Filed At. \_\_\_\_\_

Object Ident. \_\_\_\_\_

Ident. By \_\_\_\_\_

*Signature*

6

**PLANE COORDINATE POSITION DATA**

State \_\_\_\_\_ Zone \_\_\_\_\_

X \_\_\_\_\_

Y \_\_\_\_\_

Estab. By \_\_\_\_\_

*Agency*

8

**DESCRIBE CORNER LOCATION RELATIVE TO NEAR-BY FEATURES, ALSO HOW TO REACH CORNER**

An old road runs east-west about 220 ft. south of corner. Corner easy to locate.

4

Signature  
T. Hollamon

Title  
Eng, Tech,

Division

Headquarters  
S.O.

Date  
5/17/74

7100-52-(3/68)

5

CORNER RECORD (PERPETUATION)

MONUMENT: DESCRIBE NEW MONUMENT SET, OR WORK DONE TO PRESERVE EXISTING MONUMENT

ACCESSORIES : DESCRIBE NEW BT'S WITNESS OBJECTS ETC. ESTABLISHED, OR WORK DONE TO PRESERVE EXISTING EVIDENCE

9

I placed blank B.T. tags on all 4 B.T.'s.

10

Work Done By \_\_\_\_\_ Title \_\_\_\_\_ Date \_\_\_\_\_ State Registration No. or Agency \_\_\_\_\_

Certified Cor. Record Prepared ? Yes No Filed At: \_\_\_\_\_ Date \_\_\_\_\_

11

REMARKS

(Cont. from block 3)  
A 15" p.pine bears N. 73<sup>0</sup>W, approx. 9 ft. Scribed T4S, R30E , S14, B.T. It has old location poster. It also has the top broken out about 50 ft. high but still lives. An old location poster on a 9" fir bears NE about 20 ft. An old location poster on a 9" p. pine bears south about 240 ft. (20 ft. south of old road).

Index File No. T. R. M. Tract or Surv. No. Cor.

12

13