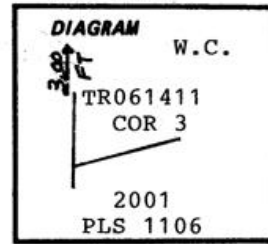


CERTIFIED RECORD OF LAND CORNER MONUMENTATION

T4N R38E

History of original corner establishment:
None. This corner was established and
monumented as part of this survey.



Description of corner evidence found:

Not applicable.

Description of monument and accessories established to perpetuate the original location of this corner:

Corner point falls in 30" diameter dying white fir. At a point S 01°00'21" W, 3.00 feet from true corner point, on the North-South centerline of Section 7, set a 2 1/2" x 30" aluminum pipe with a 2 1/2" aluminum cap 24" in-ground surrounded with a mound of earth and stone. Set steel fence post South of corner and attached signs 54-2 and 54-4. Monument cap is marked as shown in diagram.

New bearing trees, measurements are from the witness corner monument:
A 21" ponderosa pine bears S 72 1/2° E, 40.1 feet, scribed "X" at breast height and "BT" at base.
A 6" white fir bears S 13 1/2° W, 17.7 feet, scribed "X" at breast height and "BT" at base.
Bearing trees have a brass washer stamped "PLS 1106" nailed to face of lower blaze. Painted blaze faces only. Did not place signs on bearing trees.

Compass declination: 18° East

Witness:
Jason Wells, LSIT
Mark Hammersla

REGISTERED
PROFESSIONAL
LAND SURVEYOR

With R. Wells

OREGON
JULY 22, 1977
WILLIAM R. WELLS
1106

renews 6-30-02

Office of... Survey ... County of... Umatilla ...
State of... OR ... I hereby certify that the within instrument was filed in this office
for record on the... day of... , 19....

..... by
(COUNTY OFFICIAL) (DEPUTY)

Form R6-7100-57 (9/71)

*GPO - 590-455, 1994

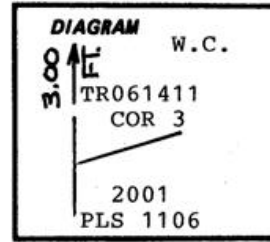
*T4N R38
?*

01-149-B

CERTIFIED RECORD OF LAND CORNER MONUMENTATION

T4N R38E

History of original corner establishment:
None. This corner was established and
monumented as part of this survey.



Description of corner evidence found:

Not applicable.

Description of monument and accessories established to perpetuate the original location of this corner:

Corner point falls in 30" diameter dying white fir. At a point S 01°00'21" W, 3.00 feet from true corner point, on the North-South centerline of Section 7, set a 2 1/2" x 30" aluminum pipe with a 2 1/2" aluminum cap 24" in ground surrounded with a mound of earth and stone. Set steel fence post South of corner and attached signs 54-2 and 54-4. Monument cap is marked as shown in diagram.

New bearing trees, measurements are from the witness corner monument:
A 21" ponderosa pine bears S 72 1/2° E, 40.1 feet, scribed "X" at breast height and "BT" at base.
A 6" white fir bears S 13 1/2° W, 17.7 feet, scribed "X" at breast height and "BT" at base.
Bearing trees have a brass washer stamped "PLS 1106" nailed to face of lower blaze. Painted blaze faces only. Did not place signs on bearing trees.

Compass declination: 18° East

Witness:
Jason Wells, LSIT
Mark Hammersla

REGISTERED
PROFESSIONAL
LAND SURVEYOR

William R. Wells

OREGON
JULY 22, 1977
WILLIAM R. WELLS
1106

renews 6-30-02

Office of... *County Surveyor* County of... *Umatilla*.....
State of... *Oregon*..... I hereby certify that the within instrument was filed in this office
for record on the..... day of....., 19.....

..... by
(COUNTY OFFICIAL) (DEPUTY)