

Form 874-9

U. S. DEPARTMENT OF AGRICULTURE  
FOREST SERVICE

Umatilla NATIONAL FOREST

CORNERS OF THE PUBLIC SURVEY

T. 34N. R. 37E. W Mer.

14 Corner common to Sections  
2, and 35

DESCRIPTION OF CORNER

Corner consists of a Yew wood stake

Dimension above ground 4 inches.  
Sketch grooves, letters, figures, or notches, on proper face or edge.

CARDINAL POSITION

DIAGONAL POSITION

N	W	S	E

NW	SW	SE	NE

Mound of \_\_\_\_\_ is located \_\_\_\_\_

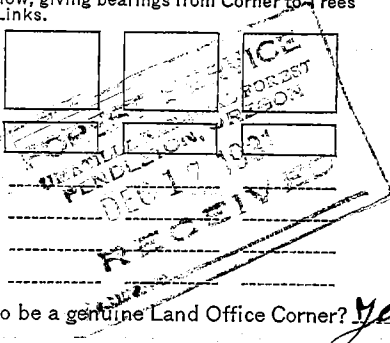
Pits are located \_\_\_\_\_

Sketch markings of Bearing Trees (or Rocks) in proper box and fill blanks below, giving bearings from Corner to Trees and Distances in Links.

1/4 S

BT

Species WF  
Diameter 28"  
Bearing S-34E  
Distance 40'



Do you believe this to be a genuine Land Office Corner? Yes  
If not, why? \_\_\_\_\_

Albert Baker

Signature.

Forest Ranger

5-19-31

Date.

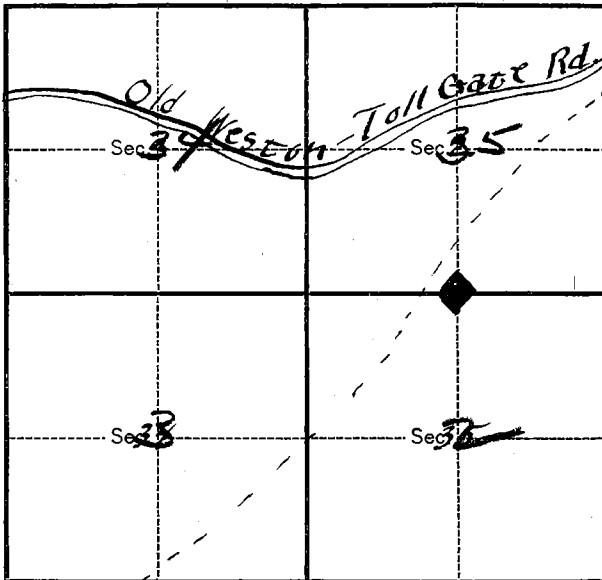
Title.

8-2027

T. 3-4 N. R. 37 E. W Mer.

8-3027

(Make sketch of topography near Corner.)



Metal Location Poster is on a D.F.  
tree 11 inches diameter, on the WEST  
side of COTHPK  
from which this Corner bears N. 62 E  
1/5 chains distant.

Give any further facts which will aid in finding this  
Corner again.

Corner is in a heavy mixed  
growth of north slope timber.  
Land practically level. An old  
slightly used trail runs 20  
feet west of corner in a N.E.  
& S.W. direction.  
A hard corner to describe lo-  
cation.

Index \_\_\_\_\_  
 File No. A 19

**CORNER RECORD (SEARCH)**

(Ref. FSM 7151.4)

Tract or Survey No. \_\_\_\_\_  
 Cor. No. A 19

T 3 N R. 37 E

R.D. Pendleton County Umatilla

Merid. Willamette

N.F. Umatilla State Oregon

**CORNER DIAGRAM**

T 4 N R 37 E  
1 S 35  
4 S 2  
 T 3 N R 37 E  
 R P E 2 8 0 8  
1976



**DESCRIBE CORNER MONUMENT FOUND**

NONE

**DESCRIBE BEARING TREES OR OTHER OFFICIAL ACCESSORIES FOUND**

A fir stump 30" diam. with healed lower blaze and downed and rotting tree alongside with visible scribing 1/4 S bears S 30° W., 35.64 ft. (54 lks)

**PHOTO IDENTIFICATION DATA**

Photo No. \_\_\_\_\_  
 Filed At. \_\_\_\_\_  
 Object Ident. \_\_\_\_\_  
 Ident. By \_\_\_\_\_  
 Signature \_\_\_\_\_

**DESCRIBE CORNER LOCATION RELATIVE TO NEAR-BY FEATURES, ALSO HOW TO REACH CORNER**

From east edge of McDougall camp follow logging road north and east 0.4 miles to a north-south fence line. Placed a location tag on 16" fir south of road in fence line marked 1/4 corner south 1000 feet.

**PLANE COORDINATE POSITION DATA**

State \_\_\_\_\_ Zone \_\_\_\_\_  
 X \_\_\_\_\_  
 Y \_\_\_\_\_  
 Estab. By \_\_\_\_\_  
 Agency \_\_\_\_\_

Signature James D. Walker

Title \_\_\_\_\_ Division RPE 2808 Headquarters \_\_\_\_\_ Date 7/23/76 7100-52 (3/68)

6

7

8

2

3

4

5

CORNER RECORD (PERPETUATION)

MONUMENT: DESCRIBE NEW MONUMENT SET, OR WORK DONE TO PRESERVE EXISTING MONUMENT

Set a 2½" Brass cap on a 2" iron pipe 31" long 6" above the ground with a 6' steel fence post 3' west with sign 54-4 attached.

9

ACCESSORIES : DESCRIBE NEW BT'S WITNESS OBJECTS ETC. ESTABLISHED, OR WORK DONE TO PRESERVE EXISTING EVIDENCE

A fir 9" diam. bears N 56° E., 22.0 ft. dist. marked 1/4 S 35 BT  
A fir 10" diam. bears S 02° E., 20.0 ft. dist. marked 1/4 S 2 BT

Each BT has a sign 54-3 attached 6" below a band of red paint and has a brass washer marked RFE 2808 nailed flush with BT blaze.

10

Work Done By. James D. Hanley Title Engineer Date 7/27/76 State Registration No. ORFE 2808  
or Agency

Certified Cor. Record Prepared ? Yes NE Filed At: Pendleton, Oregon Date 8/ /76

11

REMARKS

1/4 corner is in a fence line 10 ft. north of fence corner.

Placed a sign 54-3 on original section 2 BT stump.

12

Index File No. A 19 T. 3 N R. 37 E W.

Tract or Surv. No.

Cor.

13

LAND CORNER RECORD

5680-2

C.R.

1. T. T1N R. 37E No. Z-19 Cor. 1/1 Mer Will State Oregon N. F. Umatilla Dist. Pendleton 7

(Rectangular)

2. Corner Status

3. Original Description \_\_\_\_\_ Vol. \_\_\_\_\_ Page \_\_\_\_\_ Where Recorded \_\_\_\_\_

4. Description of Corners: Ref: T. B N., R. 37 E., A-19

Brass Cap? 500 Mon. F, 1a

5. Investigation Notes:

7. Photo Identification

Photo No. \_\_\_\_\_

Ident. By: \_\_\_\_\_

8. Plane Coordinate Position Data

State \_\_\_\_\_ Zone \_\_\_\_\_

X \_\_\_\_\_

Y \_\_\_\_\_

Estab. By \_\_\_\_\_

Field Book No. \_\_\_\_\_

Where Filed \_\_\_\_\_

9. Evaluation

Authentic \_\_\_\_\_

Needs Verif. \_\_\_\_\_ Monument No

Re-estab. \_\_\_\_\_ Survey X

Land Status \_\_\_\_\_

6. Signed \_\_\_\_\_ Title \_\_\_\_\_ Date \_\_\_\_\_ 6

PERPETUATION RECORD

10. Monument:

11. Accessories

Field Book \_\_\_\_\_ Page \_\_\_\_\_

12. Set By \_\_\_\_\_ Title \_\_\_\_\_  
License \_\_\_\_\_ Agency \_\_\_\_\_ Date \_\_\_\_\_

13. Recorded By \_\_\_\_\_ Volume \_\_\_\_\_ Page \_\_\_\_\_  
(Agency)  
\_\_\_\_\_  
(Date) (City) (County) (State)

14. Remarks:

Z-19