

OREGON CORNER RESTORATION FORM

Section 36 Township 4N Range 37E
 County Umatilla Date: August 15, 2000

Corner Designation: 4N37V22

W1/16 corner common to sections 25 and 36,
 T4N, R37E, W.M.

Condition Report Only
 Not found
 Remonumented
 Unrecorded
 Surveyed in
 Referenced out

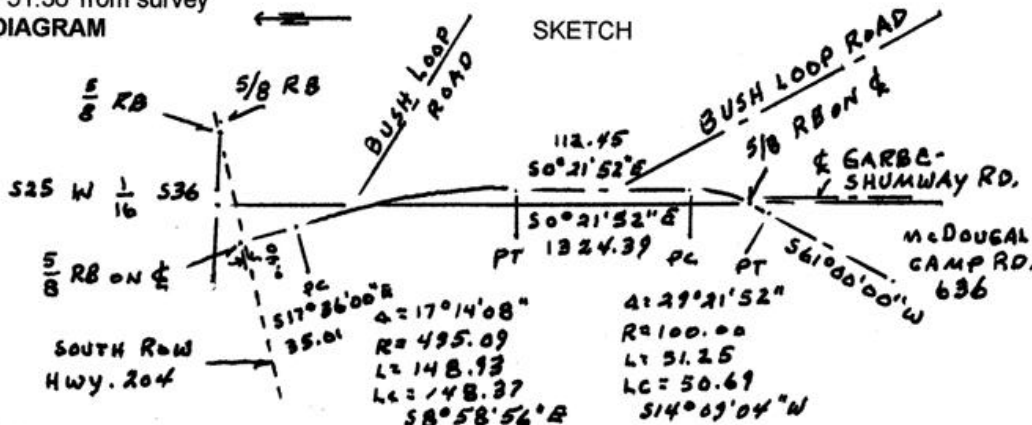
Previous Renewals / Surveys, etc.

Corner set by Harris in 1979 under Umatilla County survey R-165-A was a 5/8 rebar with 5/8" rebar references bearing N89°48'00"E, 62.61' and S0°21'07"E, 14.83'.

Monument and Accessories found: (condition and source)

Found the monument as described by Harris in survey R-165-A. The 1/16 corner was 16" below the surface of the south shoulder on Highway 204. Also found both 5/8 rebars as described by Harris in survey R-165-A. One was S0°21'52"E, 14.83'. The other was N89°42'32"E, 62.61'. Also found a 5/8" rebar with red plastic cap stamped PLS 852 N89°48'00"E, 51.36' from survey

DIAGRAM



MONUMENT (S) AND ACCESSORIES SET (Procedures and Description)

Drove a 3" iron pipe over the 5/8 rebar at the 1/16 corner location. Filled the pipe with sackcrete. Set a PK nail directly over the rebar 2" below the surface of the shoulder.

REFERENCES SET:

A 5/8 x 24 rebar with 2 1/4 " red plastic cap stamped HADDOCK SURVEYING, ORLS 852 and WALS 13922 was set on the apparent centerline of the McDougal Camp Road No. 636, bearing S54°13'59"W, 29.10'. A second 5/8" x 24" rebar with an identical plastic cap was set bearing S0°39'18"E, 347.29'. Both caps were set 2" below the road surface and on the apparent centerline of the McDougal Camp Road. The computed alignment for that Road is given in the sketch above.

Location and comments
 On the south side of Oregon State Highway 204, at the junction of the McDougal Camp Road.

Compass Declination

Surveyors Seal

Firm / Agency
 Haddock Surveying
 Address
 P.O. Box 1574
 Pendleton, Or. 97801

REGISTERED
 PROFESSIONAL
 LAND SURVEYOR

David L. Haddock

OREGON
 JULY 12, 1988
 DAVID L. HADDOCK
 852

RENEWS 6-30-01

RECEIVED BY:

Umatilla County Surveyor
 Date: 9-00
 Rec'd By: KK
 No. 00-186-R