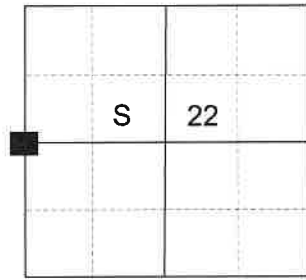


CERTIFIED RECORD OF LAND CORNER MONUMENTATION

HISTORY OF ORIGINAL CORNER ESTABLISHED:

Original corner established GLO under Contract No.332 executed by Geo.S.Pershin, dated July, 1879. Surveyor General field notes state:
Set tamarack post on South slope for 1/4 sec. cor.
A tamarack 6" diam. bears North 16° East, 30 lks. dist.
A Fir 17" in diam. bears South 40° West, 90 lks. dist.

T 4 N R 37 E P-13



In survey No. N-65-B, James Hambelton found the original GLO Corner.

DESCRIPTION OF CORNER EVIDENCE FOUND:

Found a 5/8" iron pin 2" above ground with a 1' diam. mound of stone.
A 15' tall Tamarack Stob, 23" in diam., bears North 16° East, a dist. of 20.00' with BLM tag dated 1/19/77, dead and standing with fragmented scribe visible.
No sign of the original Southwest bearing tree. Area was extensively logged and a berm of dirt was created near the property line.

DESCRIPTION OF MONUMENT AND ACCESSORIES I ESTABLISHED TO MONUMENT THE ORIGINAL LOCATION OF THIS CORNER:

At found iron pin, I added a 2 1/2" aluminum cap, marked as shown below and in a 2 ft. diam. collar of stone, from which:

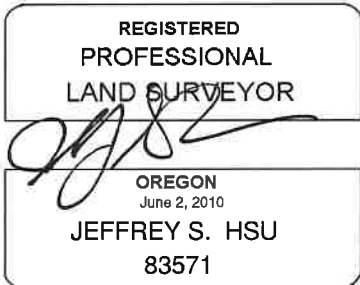
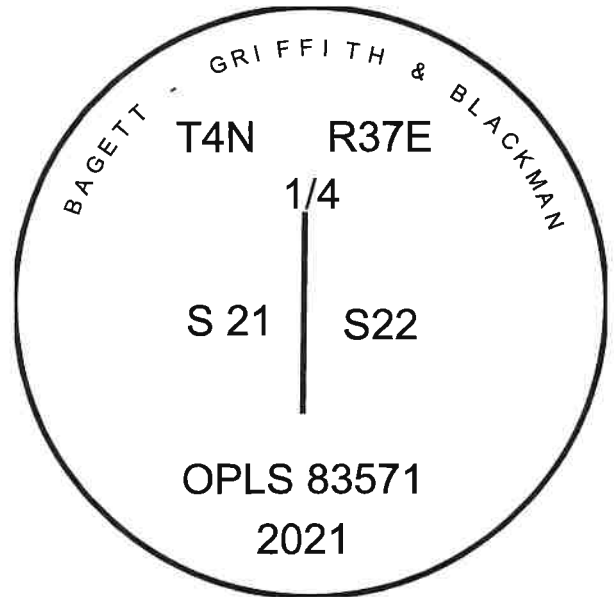
NEW BEARING OBJECTS:

A 6" Douglas Fir bears North 31° East, a dist. of 27.10 ft., marked 1/4 S22 BT
A 15" Douglas Fir bears South 74° East, a dist. 7.25 ft., marked 1/4 S22 BT
A 26" White Fir bears South 32° West, a dist. of 10.25ft., marked 1/4 S21 BT
A 26" White Fir bears North 75° West, a dist. of 23.00ft., marked 1/4 S21 BT

Set a steel fence post approx. 1' North Falls in East/West fence line.

I hereby certify that the corner was monumented on October 11, 2021.

Witness: Kyle A. Tucker, Emmitt C. Ambert



Renewal Date: June 30, 2023

I used a steel tape and magnetic compass in the establishment of the new accessories. I used 14° East declination, the distances are to a 60d spike driven into the right side of the root crown of the bearing trees. A brass washer marked OPLS 83571 is attached to the BT blaze of the new bearing trees.

21-124-8