

OREGON CORNER RESTORATION FORM

Section: 14 & 23

Township: 4 North

Range: 37 East

County: Umatilla

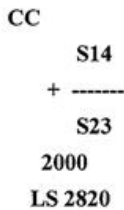
Date: 05/23/2000

Corner Designation: N-17, closing corner common to Sections 14 & 23 only.

Previous Renewals/Surveys, etc.: This corner was originally set U.S. Deputy Surveyors Charles L. and William C. Campbell under their contract No. 733 dated March 22, 1901. The Surveyor General's notes state "set a pine post 6 ins. sq., 3 1/2 ft. long 2 1/2 ft. in the ground for Closing Cor. of Secs. 14 and 23, marked C.C. T4N R37E on E, S 23 on S, and S 14 on the N. faces, with 2 grooves on the E. and 3 grooves on the S. faces, from which: A pine, 48 ins. diam. brs. N16°30'E 25 lks. dist., marked T4N R37E S14 BT. A pine, 16 ins. diam. brs. S68°E 92 lks. dist., marked T4N R37E S23 BT.

Monument(s) & Accessories Found (Condition & Source): Found a down 50" pine snag with visible scribes N16°30"E 16.5 feet, also found a 24" ponderosa pine with a healed blaze S68°E 60.7 feet as described by Campbell

Monument Detail: T4N R37E



Monument Set (Procedures & Description): S16°30'W 16.5 feet from the down 50" pine bearing tree and S05°51'34"E 64.02 (97 lks. per Campbell) from the Section corner common to Sections 15 & 23. Set a 1" x 30" galvanized iron pipe 26" in the ground with a 2 1/2" brass cap stamped as shown. There was evidence a decayed wood post was found in the hole for the monument.

New Accessories: Set 6' steel fence post 3' West of the corner. A 10" ponderosa pine bears N15°E 43.5 feet, marked T4N T37E S14 BT. A 23" ponderosa pine bears S17°E 12.1 feet, marked T4N R37E S23 BT. A 18" ponderosa pine bears S43°E 28.1 feet, marked T4N R37E S23 BT. A 15" ponderosa pine bears N60 1/2°W 24.8 feet, marked T4N R37E S15 BT. A brass cap monument marking the Section corner common to Sections 15 & 22 bears N05°51'34"W 64.02 feet. All bearing trees have a 6" wide red band painted around them and bearing object signs attached.

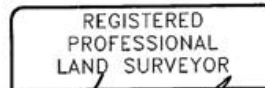
Location & Comments: This corner is located on a timbered East slope 300'± Northeast of the road into Elbow Creek.

Compass Declination:

19° East

Surveyor's Seal

Firm/Agency: Tomkins Land Surveying, Inc.
20 E. Poplar, Suite 204
Walla Walla WA 99362



Signature: Greg E. Flowers
OREGON
JUNE 30, 1997
GREG E. FLOWERS
02820LS

Party Chief: Thomas Butler

Notes: Thomas Butler

Witness: Ryan Laughery

RENEWS 12/31/01

12/15/00

RECEIVED BY

Umatilla County Surveyor

Date 12-00

Rec'd By SM

No. 00-258-C

OREGON CORNER RESTORATION FORM

Section: 15 & 22
Township: 4 North
Range: 37 East
County: Umatilla
Date: 05/23/2000

Corner Designation: N-17, corner common to Sections 15 & 22 only.

Previous Renewals/Surveys, etc.: The corner was originally set by U.S. Deputy Surveyor, Geo S. Pershin, under his contract No. 332, dated July 29, 1879. The Surveyor General's notes state: "Set basalt stone on East side of spur for corner to sections 14, 15, 22, & 23 from which a Pine 20 in di. brs. N 53 degrees E 229 lks. dist.

Pine 48 in di. brs. S 5 degrees E 145 lks. dist.

Pine 4 in di. brs. S 56 degrees W 138 lks. dist.

No other trees near."

The corner was not recovered by U.S. Deputy Surveyor, Marcus Buchanan, under his contract No. 635, dated April 19, 1895.

The Surveyor General's notes state: ""still not finding a former corner; set a fir post 3 ft long 4 in. square, 24 ins in the ground for corner to Secs. 14,15, 22,and 23, marked T4N, S 14 on NE." (it should be noted that Buchanan's survey was rejected concerning letter "E" dated March 8, 1899)

U.S. Deputy Surveyor's Charles L. and William C. Campbell under their contract No. 733, dated March 22, 1901 recovered the corner. The surveyor Generals notes state "the cor. of secs. 14, 15, 22 and 23 which is a post 4 ins. square marked per instructions instead of a basalt stone as stated by the Surveyor General". From which a pine 24 ins. diam., bears N37°E 284 lks., dist., marked T4N R37E S14 BT. A pine 48 ins., diam., bears S8°30'E 73 lks., dist., marked T4N R37E S23 BT. A pine 12 ins., diam., bears S86°W 100 lks., dist., marked T4N R37E S22 BT.

Monument(s) & Accessories Found (Condition & Source): Found a down 50" pine snag with visible scribes S8°30'E 48.2 feet, a 18" ponderosa pine with an opened blaze and a 24" ponderosa pine with a partially healed blaze bears S86°W 64.6 feet, a 36" ponderosa pine with a mostly healed blaze bears N37°E 187 feet, as described by Campbell.

Monument Detail: T4N R37E

S15
----- + S14
S22
2000
LS 2820

Monument Set (Procedures & Description): N8°W 48.2 feet from the center of the stump hole of the 50" pine snag bearing tree, set 2 1/2" brass cap on a 1" x 30" galvanized iron pipe, stamped as shown in Monument Detail 6" in the ground to solid rock. Surrounded with a mound of stone 3 feet in diameter x 2 feet high.

New Accessories: Set 6' steel fence post 5' West of corner. The closing corner for Sections 14 & 23 which is a 1" x 30" galvanized iron pipe with a 2 1/2" brass cap bears S05°51'34"E 64.02 feet.

A 15" ponderosa pine bears S16°20'W 53.6 feet, marked T4N R37E S22 BT. A 17" Douglas fir bears S28°30'W 38.1 feet, marked T4N R37E S22 BT. A 17" ponderosa pine bears N4°39'W 104.3 feet, marked T4N R37E S15 BT. All bearing trees have a 6" red band painted around them and bearing object signs attached.

Location & Comments: The corner is located on a timbered East slope 300' ± Northeasterly of the road into Elbow Creek.

Compass Declination:
19° East

Firm/Agency: Tomkins Land Surveying, Inc.
20 E. Poplar, Suite 204
Walla Walla WA 99362

Party Chief: Thomas Butler

Notes: Thomas Butler Witness: Ryan Laughery

Surveyor's Seal

REGISTERED PROFESSIONAL LAND SURVEYOR

Greg E. Flowers

OREGON
JUNE 30, 1997
GREG E. FLOWERS
02820LS

RENEWS 12/31/01

12/15/00

RECEIVED BY

Umatilla County Surveyor

Date 12-00

Rec'd By SM

No. 00-254-C