

# CERTIFIED RECORD OF LAND CORNER MONUMENTATION

**HISTORY OF ORIGINAL CORNER ESTABLISHED:**

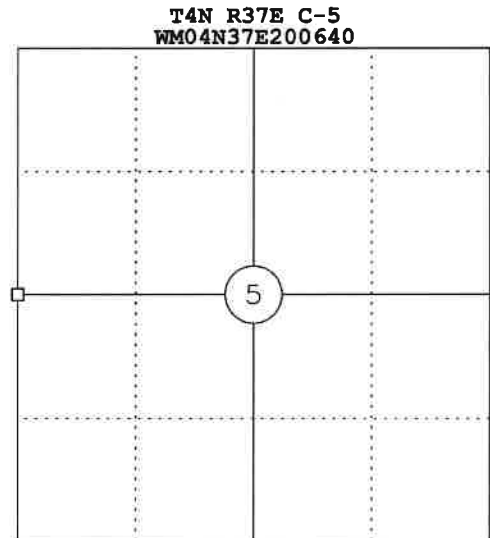
1879 G.L.O. SURVEY GEORGE PERSHIN  
 "SET BASALT STONE 18X14X5 ON STEEP N.W. HILLSIDE FOR 1/4  
 SEC. COR."

**DESCRIPTION OF CORNER EVIDENCE FOUND:**

FOUND BROWN BASALT STONE 18X14X5 ON STEEP NORTHWEST ASPECT,  
 NO MARKINGS, 1.1 FEET BELOW SURFACE.

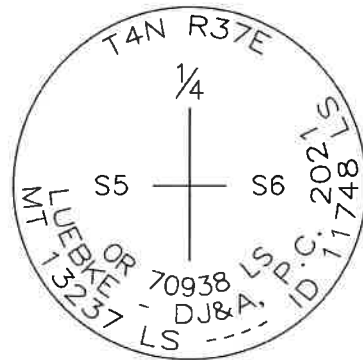
**DESCRIPTION OF SET MONUMENT AND ACCESSORIES:**

SET A 3-1/4" ALUMINUM CAP ON 3/4" x 30" REBAR STAMPED "T4N  
 R37E 1/4 S5 S6 OR70938LS LUEBKE - DJ&A, P.C. 2021 MT 13237  
 LS ---- ID 11748 LS" IN PLACE OF STONE, STONE SET UPSIDE  
 DOWN ALONGSIDE.



**SURVEYOR'S CERTIFICATE:**

I HEREBY CERTIFY THAT THIS CORNER WAS  
 MONUMENTED ON APRIL 21, 2021.



REGISTERED  
 PROFESSIONAL  
 LAND SURVEYOR

*Kurt Luebke*

OREGON  
 JULY 9, 2002  
 KURT A. LUEBKE  
 70938

MONUMENT AND NEW REFERENCES WERE SET USING A  
 TRIMBLE R10 GNSS SYSTEM.

**NAD83 (2011) (EPOCH 2010.000)**  
**LATITUDE:** N45°51'08.77071"  
**LONGITUDE:** W118°13'56.27267"

EXPIRES 12-31-2022