

OREGON CORNER RESTORATION FORM

COUNTY: Umatilla

DATE: July 27, 2006

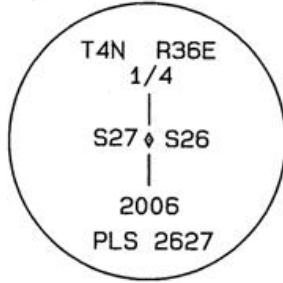
CORNER DESIGNATION: T-17 East 1/4 Corner Section 27, T. 4 North, Range 36 E.W.M.

PREVIOUS RENEWALS/SURVEYS ETC.

William Odell set a post and scribed two bearing trees (Contract No. 114, dated July 2, 1866).

MONUMENT AND ACCESSORIES FOUND: None

MONUMENT MARKING DETAIL:



OREGON STATE PLANE COORDINATES, NORTH ZONE, NAD '83 ('91), INT. FEET:

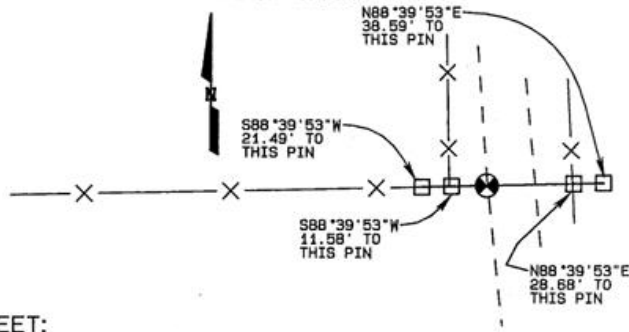
NORTH: 783,452.96

EAST: 8,764,463.90

SKETCH:

NO SCALE

NOTE: BEARINGS AND DISTANCES ARE NAD '83 ('91) GRID



- ⊗ SET 2" ALUMINUM CAP ON 5/8" X 30" G.I.P. 4" BELOW GROUND
- SET 5/8" X 24" STEEL REBAR WITH BLUE PLASTIC CAP MARKED "UCPWD...LS2627"

MONUMENT SET (PROCEDURES AND DESCRIPTION):

Held the line between the monument set at the Northeast Corner of Section 27 and the monument set by Bill Wells at the Southeast Corner of Section 27 for longitude and an east-west fence to the west for latitude and set a 5/8" X 30" steel rebar with 2" aluminum cap marked as shown above 4" below the surface of the county road shoulder.

NEW ACCESSORIES:

A 5/8" X 24" steel rebar with blue plastic cap marked "UCPWD...LS2627" set on the county road R/W line bears S8857°39'53"W, 21.49'. A bearing object tag is wired to the rebar.

A 5/8" X 24" steel rebar with blue plastic cap marked "UCPWD...LS2627" set on the county road R/W line bears S8857°39'53"W, 11.58'. A bearing object tag is attached to a nearby fence post which is 0.4' northeast of rebar.

A 5/8" X 24" steel rebar with blue plastic cap marked "UCPWD...LS2627" set on the county road R/W line bears N8857°39'53"E, 38.59'. A bearing object tag is wired to the rebar.

A 5/8" X 24" steel rebar with blue plastic cap marked "UCPWD...LS2627" set on the county road R/W line bears N8857°39'53"E, 28.68'. A bearing object tag is wired to the rebar.

LOCATION AND COMMENTS:

The monument is set 4" below the surface of the county road shoulder where the road crosses an east-west fence line to the west approximately 0.2 mile north of State Highway 204.

COMPASS DECLINATION:

N/A

FIRM/AGENCY:

Umatilla County Road Dept.
3920 Westgate
Pendleton, Oregon 97801

PARTY CHIEF:

Gary Roberts

NOTES:

None

WITNESS:

None

SURVEYOR'S SEAL

REGISTERED PROFESSIONAL LAND SURVEYOR

Gary R. Roberts
OREGON
JULY 30, 1993
GARY R. ROBERTS
2627

RENEWS 12/31/06

06-473-C

11-073-C