

OREGON CORNER RESTORATION FORM

CORNER DESIGNATION: T4N, R36E, P-17

EAST QUARTER CORNER OF SECTION 22, TOWNSHIP 4 NORTH, RANGE 36 EAST, W.M.,
UMATILLA COUNTY, OREGON.

PREVIOUS RENEWALS / SURVEYS, ETC.:

T4N R36E WAS ORIGINALLY SUBDIVIDED BY U.S. DEPUTY SURVEYOR WILLIAM H. ODELL UNDER CONTRACT NO. 114 DATED JULY 2, 1866. THE NOTES READ, "SET POST CORNER FOR 1/4 SECTION FROM WHICH A PINE 20 IN. DIA. BEARS SOUTH 362, NO OTHER TREE, DUG PITS AND RAISED MOUND AS PER INSTRUCTIONS." COUNTY ROAD RECORDS FOR OLD ROAD NUMBER 87 (ESTABLISHED IN 1881) DESCRIBE RUNNING SOUTH 02°21' WEST 76.95 CHAINS TO SECTION CORNER COMMON TO SECTIONS 22, 23, 26, & 27. NO REFERENCE OF THE QUARTER CORNERS LOCATION IS PROVIDED. OLD PRIVATE SURVEY NO 8B BY W.T. CHALK (PER J.C. ARNOLD) DATED MARCH 31, 1885 REESTABLISHED THE EAST LINE OF SECTION 22. AT THE QUARTER CORNER LOCATION THE REMAINS AND SCRIBES OF THE ORIGINAL BEARING TREE WERE FOUND AND AT A PROPORTIONATE DISTANCE SET A BASALT STONE (11X7.5X4.5) MARKED 1/4 IN LANE NORTH & SOUTH. THEY ALSO COMMENT THAT THE LOCATION IS IN HARMONY WITH FENCING LINES. IN 2005, SURVEY NO. 05-198-C BY STEPHEN HADDOCK REESTABLISHED THE NORTHEAST CORNER OF SECTION 22 AND FOUND A 5/8" BOLT AT THE SOUTHEAST CORNER OF SECTION 22. IN 2006, SURVEY NO. 06-473-C BY GARY ROBERTS SET A 2-1/2" BRASS CAP AT THE QUARTER CORNER LOCATION BY HOLDING THE LINE BETWEEN THE FOUND NORTHEAST CORNER OF SECTION 22 AND SOUTHEAST CORNER OF SECTION 22 USING THE HADDOCK SURVEY FOR LONGITUDE, AND THE EXISTING EAST-WEST FENCE LINES FOR LATITUDE.

MONUMENT AND ACCESSORIES FOUND:

FOUND ROBERTS 2-1/2" BRASS CAP (OUT OF POSITION) AND ALL STEEL REBAR REFERENCES. ALSO FOUND MONUMENTS OF RECORD SET AT THE NORTHEAST AND SOUTHEAST CORNERS OF SECTION 22. IT BECAME OBVIOUS FROM TIES TO CORNERS NORTH AND SOUTH AND TO ALL REFERENCE MONUMENTS THAT THE 2-1/2" BRASS CAP WAS OUT OF POSITION BY APPROXIMATELY 23 FEET EASTERLY. IT BECAME CLEAR THAT THE MONUMENT HAD BEEN MOVED TO A NEARBY FENCE AND A SINKHOLE COULD CLEARLY BE SEEN WHERE THE CAP HAD ONCE BEEN. THE HOLE MATCHED REFERENCES VERY WELL.

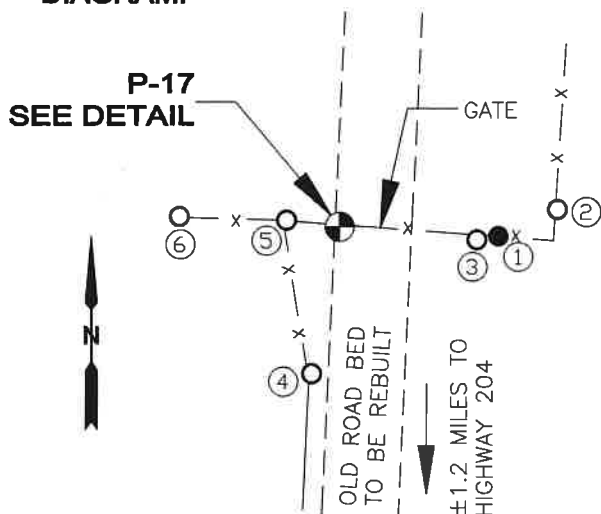
MONUMENT AND ACCESSORIES SET:

AT THE PROPORTIONATE LOCATION BETWEEN THE NORTHEAST AND SOUTHEAST CORNERS OF SECTION 22, ACCORDING TO RECORD OF SURVEY 06-473-C, I SET A 2-1/2 INCH BRASS CAP ON 1" (I.D.) X 30" GALVANIZED IRON PIPE, 6" BELOW GRADE AND STAMPED AS SHOWN IN THE BELOW DETAIL.

REFERENCES:

- ① SET 5/8" X 30" STEEL REBAR MARKED "UCPWD LS89374", CORNER BEARS N 86°37'23" W, 16.50'.
- ② FOUND 2-1/2" BRASS CAP OUT OF POSITION AND STAMPED AS SHOWN IN P17-06-473-C. MONUMENT HAS BEEN MOVED. SAWED OFF CAP AND LEFT 1-1/4" PIPE IN PLACE, CORNER BEARS S 85°26'17" W, 22.73'.
- ③ FOUND 5/8" STEEL REBAR WITH BLUE PLASTIC CAP MARKED "UCPWD LS2627", CORNER BEARS N 84°37'38" W, 14.30'.
- ④ FOUND 5/8" STEEL REBAR WITH BLUE PLASTIC CAP MARKED "UCPWD LS2627", CORNER BEARS N 10°49'22" E, 15.55'.
- ⑤ FOUND 5/8" STEEL REBAR WITH BLUE PLASTIC CAP MARKED "UCPWD LS2627", CORNER BEARS S 82°44'57" E, 5.55'.
- ⑥ FOUND 5/8" STEEL REBAR WITH BLUE PLASTIC CAP MARKED "UCPWD LS2627", CORNER BEARS S 86°16'45" E, 16.58'.

DIAGRAM:



P-17 DETAIL:



COORDINATES:

OCRS, LA GRANDE ZONE:
N: 294,942.50 E: 56,136.64

WGS 84 GEODETIC:
LATITUDE: 45°48'30.21762"
LONGITUDE: 118°17'39.96943"

BASIS OF BEARING:

OCRS, LA GRANDE ZONE

FIRM/AGENCY:

UMATILLA COUNTY PUBLIC
WORKS DEPARTMENT
3920 WESTGATE, PENDLETON,
OREGON 97801

PARTY CHIEF: MATT KENNY

WITNESS: TROY ALDERSON

**REGISTERED
PROFESSIONAL
LAND SURVEYOR**

OREGON
JAN 12, 2016
MATTHEW PATRICK KENNY
89374PLS

RENEWS: 6-30-21

20-003-C