

OREGON COF 'R RE 'ORATION FORM

COUNTY: Umatilla DATE: 05/14/97

CORNER DESIGNATION: Z-1, The Southwest Corner of Section 31, T4N., R35E., W.M.

PREVIOUS RENEWALS/SURVEYS, ETC.: Corner established by Wm. H. Odell and William S. Lewis, GLO Contract No. 110, dated February 7, 1865. Notes state:

Set post, standard cor. for secs. 31 & 36, T. 5 N., in Rs. 34 & 35 E., land slopes to the N.; drove charred stake, dug pits and raised mound as per instructions. A stone and bottle were re-established for the corner by Willard Bradley, County Survey No. 406.

MONUMENT AND ACCESSORIES FOUND: None. This corner position was re-established by calculation, with reference to County Survey No. 406, by willard Bradley, dated April 1915, after recovering the South 1/16 corner and Southeast corners of Section 31 as indicated on Bradley's Survey Plat.

MONUMENT MARKING DETAIL:

T4N
R34E R35E
S36 | S31
S1 | S6
R34E R35E
T3N
1997
PLS 1106

MONUMENT SET:

Set a 2 1/2" brass cap on a 1" galvanized iron pipe 6" below surface of paved road, cap marked as shown in Monument Marking Detail.

Accessories:

An 8' stop sign post bears N 37° E, 37.0 feet.
A 5/8" x 24" iron rod with a yellow plastic cap marked "OR PLS 1106, WA PLS 17372" bears S 61° E, 21.2 feet.
A 10' stop/road sign post bears S 84° W, 36.0 feet.
A 5/8" x 24" iron rod with a yellow plastic cap marked "OR PLS 1106, WA PLS 17372" bears N 45° W, 49.3 feet.
Witness and bearing object signs attached to sign posts.
Bearing object tags attached to iron rods and steel fence posts set nearby with witness signs attached.

LOCATION & COMMENTS: Corner is located at intersection of Rainville Road and Pambrun Road on East edge of pavement.

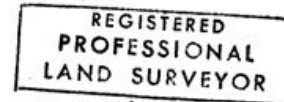
COMPASS DECLINATION: 18° East

Surveyor's Seal

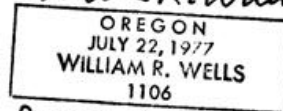
Witnesses: Kelly Snively
Jason Wells

OREGON STATE PLANE NORTH CO-ORDINATE FOR CORNER, NAD 83(91), INT. FEET:

N: 775110.83
E: 8712974.04



Will R. Wells



Renews 6-30-98