

**OREGON CORNER RESTORATION FORM**

Section 17-18-19-20 Township 4N Range 35E, W.M. Corner Code No. N05  
 County Umatilla Date September 8, 1995

**CORNER DESIGNATION**

- Condition Report Only
- Not Found
- Renewed
- Unrecorded
- Surveyed In
- Referenced Out

**Previous Renewals/Surveys, etc.**

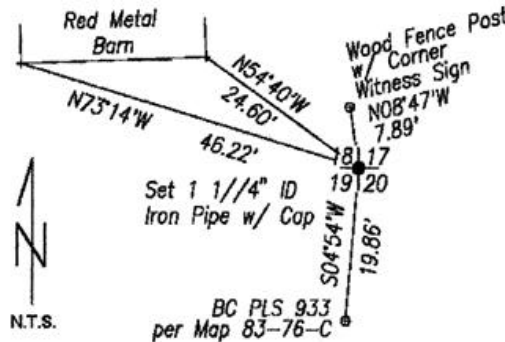
Odell set a corner post, with charred stake, pits, and mounds in 1866. In 1983, K.E.L. set a brass cap per Map 83-76-C, records of the Umatilla County Surveyor.

**Monument(s) & Accessories Found: (Condition and Source)**

Found brass cap per Map 83-76-C south of the travelled way of County Road #42. I also found a hub and tack presumed to be a control point from the K.E.L. survey. While agreeing with the method and documents used to determine the location of this corner, I disagree with the placement of the monument itself. It appears that the brass was set by radial stakeout, and that the party turned an angle left where they meant an angle right, or vice versa.

**Monument Detail**

**Sketch**



**Monument Set (Procedures and Description)**

I set a 1 1/4" I.D. Iron Pipe w/ plastic cap "OR 2166LS" for the corner.

**New Accessories**

- The Brass Cap per Map 83-76-C bears S 04° 54' W, 19.86 feet.
- A wood fence post with corner witness sign and plastic tag "OR 2166LS bears N 8° 47' W, 7.89 feet.
- The southeast corner of a red metal barn bears N54° 40' W, 24.60 feet.
- The southwest corner of a red metal barn bears N 73° 14' W, 46.22 feet.

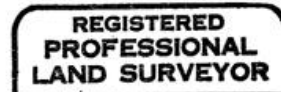
**Location & Comments**

This corner is located 1/2 mile East of the city limits of Athena at the north edge of the travelled way of County Road #42.

**Surveyor's Seal**

**Compass Declination Grid Bearings**

**Firm/Agency** Dwight M. Bartleson L.S.  
**Address** 79902 LaMar Gulch Road, Athena, OR 97813  
**Party Chief** DMB  
**Notes** DMB  
**Witness** none



*Dwight M. Bartleson*



**RECEIVED BY**

Umatilla County Surveyor  
 Date 9-95  
 Rec'd By KR  
 No. 95-150-R