

OREGON CORNER RESTORATION FORM

COUNTY: Umatilla DATE: 10/05/00

CORNER DESIGNATION: J-13

PREVIOUS RENEWALS/SURVEYS ETC.: This corner was originally established by William Odell, U. S. Deputy Surveyor, under contract No. 114, dated 2 July, 1866. The original notes state: Set post Cor. For Secs. 9, 10, 15 & 16; drove charred stake, dug pits and raised mound as per instructions. As noted on Survey Map No. 83-76-C, this corner was re-established and remonumented in 1983, based on Railroad ties. Corner per Survey No. 83-76-C had been removed and was re-established based on Survey No. 83-76-C by Wells, in 1993, Umatilla County Surveyor Record #93-42-B. Record states: At the re-established corner position, set a 2 1/2" brass cap on 1 1/4" by 30" galvanized iron pipe, with top of brass cap 6" below existing ditch line. Reference the monuments as follows: The Southeast corner of the concrete bridge wing wall on the East side of Pine Creek bears S 83°55' E 205.9'. A 3/4" brass washer, nailed to the Northwest corner of a white shed, about 1' above ground, bears S 69°40' E, 43.4'. A 3/4" brass washer, nailed to the North side of phone pole No. 283, 1' above ground, bears S 66°59' E, 10.6 feet. Placed bearing object sign on pole. A 3/4" brass washer, nailed to the North side of power pole No. 169901, 1' above ground, bears S 85°58' W, 51.2'. Placed bearing object sign on this pole. Set steel fence post 4' South of corner and attached witness corner sign.

MONUMENT AND ACCESSORIES FOUND:

Found 2 1/2" brass cap monument marked as shown in "Monument Marking Detail".

From which:

The Southeast corner of the concrete bridge wing wall on the East side of Pine Creek bears S 83°55' E, 205.9'. A 3/4" brass washer nail to the Northwest corner of a white shed, about 1' above ground, bears S 69°40' E, 43.4'. A 3/4" brass washer, nailed to the North side of phone pole No. 283, 1' above ground, bears S 66°59' E, 10.6', with bearing object sign on pole. A 3/4" brass washer, nailed to the North side of power pole No. 169901, 1' above ground, bears S 85°58' W, 51.2', with bearing object sign on pole. Steel fence post 4' South of corner with witness corner sign. Brass washers are stamped "PLS 1106".

MONUMENT MARKING DETAIL:

T4N R35E
S9 | S10
S16|S15
1993
PLS 1106

LOCATION AND COMMENTS: Corner point is approximately 1 foot South of South edge of Johnson Road.

OREGON STATE PLANE COORDINATES, North Zone, NAD 83(91), International Feet:

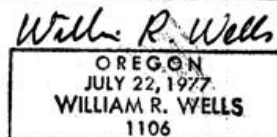
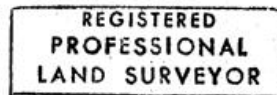
N = 796859.27
E = 8728225.06

FIRM: William R. Wells, PLS
P.O. Box 1696
Pendleton, OR 97801

COMPASS DECLINATION: 18° East

Witnesses: Jason Wells
Kevin Snively
4N35J13

Surveyor's Seal



renews 6-30-02

02-12-C